

# CoraLite® Plus 647-conjugated Cyclin E2 Polyclonal antibody

Catalog Number: **CL647-11935**

## Basic Information

### Catalog Number:

CL647-11935

### Size:

100ul , Concentration: 1000 µg/ml by Nanodrop;

### Source:

Rabbit

### Isotype:

IgG

### Immunogen Catalog Number:

AG2532

### GenBank Accession Number:

BC020729

### GeneID (NCBI):

9134

### UNIPROT ID:

O96020

### Full Name:

cyclin E2

### Calculated MW:

374 aa, 44 kDa

### Observed MW:

44 kDa

### Purification Method:

Antigen affinity purification

### Recommended Dilutions:

IF/ICC 1:50-1:500

### Excitation/Emission maxima wavelengths:

654 nm / 674 nm

## Applications

### Tested Applications:

IF/ICC, FC (Intra)

### Species Specificity:

human

### Positive Controls:

IF/ICC : HeLa cells,

## Background Information

Cyclin E2 (CCNE2) belongs to the highly conserved cyclin family, whose members are characterized by a dramatic periodicity in protein abundance throughout the cell cycle. Cyclins function as regulators of cyclin-dependent kinases (CDKs). Different cyclins exhibit distinct expression and degradation patterns which contribute to the temporal coordination of cell cycle events. CCNE2 forms a complex with and functions as a regulatory subunit of CDK2 and has been shown to specifically interact with CIP/KIP family of CDK inhibitors. CCNE2 plays a role in cell cycle G1/S transition and its expression peaks at the G1-S phase. Whereas cyclin E1 is expressed in most proliferating normal and tumor cells, cyclin E2 levels are low or undetectable in nontransformed cells, and are elevated in tumor-derived cells.

## Storage

### Storage:

Store at -20°C. Avoid exposure to light. Stable for one year after shipment.

### Storage Buffer:

PBS with 50% Glycerol, 0.05% Proclin300, 0.5% BSA, pH 7.3.

Aliquoting is unnecessary for -20°C storage

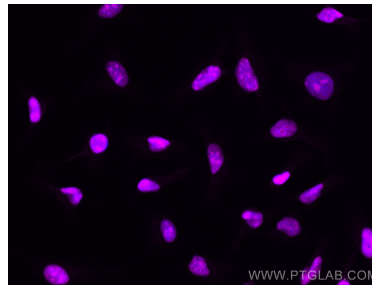
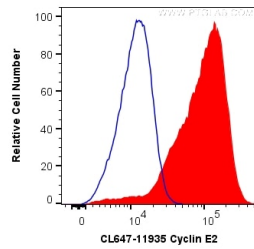
For technical support and original validation data for this product please contact:

T: 1 (888) 4PTGLAB (1-888-478-4522) (toll free in USA), or 1(312) 455-8498 (outside USA)

E: [proteintech@ptglab.com](mailto:proteintech@ptglab.com)  
W: [ptglab.com](http://ptglab.com)

This product is exclusively available under Proteintech Group brand and is not available to purchase from any other manufacturer.

## Selected Validation Data



1X10<sup>6</sup> HeLa cells were intracellularly stained with 0.2 ug CoraLite® Plus 647 Anti-Human Cyclin E2 (CL647-11935) (red), or 0.2 ug Isotype Control (blue). Cells were fixed and permeabilized with Transcription Factor Staining Buffer Kit (PF00011).

Immunofluorescent analysis of (4% PFA) fixed HeLa cells using CoraLite® Plus 647 Cyclin E2 antibody (CL647-11935) at dilution of 1:200.