

For Research Use Only

# CoraLite® Plus 647-conjugated TINAGL1 Polyclonal antibody



Catalog Number: CL647-12077

Featured Product

## Basic Information

<b>Catalog Number:</b> CL647-12077	<b>GenBank Accession Number:</b> BC009048	<b>Purification Method:</b> Antigen affinity purification
<b>Size:</b> 100ul , Concentration: 1000 µg/ml by Nanodrop;	<b>GeneID (NCBI):</b> 64129	<b>Recommended Dilutions:</b> IF 1:50-1:500
<b>Source:</b> Rabbit	<b>Full Name:</b> tubulointerstitial nephritis antigen- like 1	<b>Excitation/Emission maxima wavelengths:</b> 650 nm / 665 nm
<b>Isotype:</b> IgG	<b>Calculated MW:</b> 467 aa, 52 kDa	
<b>Immunogen Catalog Number:</b> AG2721	<b>Observed MW:</b> 52 kDa	

## Applications

**Tested Applications:**  
IF

**Positive Controls:**

**Species Specificity:**  
human, mouse, rat

IF : human liver cancer tissue,

## Background Information

Tinagl1 (tubulointerstitial nephritis antigen-like 1) is a matricellular protein most commonly associated with embryonic development, including the heart and adrenal glands. Low levels of Tinagl1 expression can be dire for craniofacial development and for female fertility. Tinagl1 can bind to EGFR and integrins on TNBC cells using the 4T1 murine model and that by interrupting normal tumor signaling in this way, cancer proliferation and metastasis pathways were downregulated.

## Storage

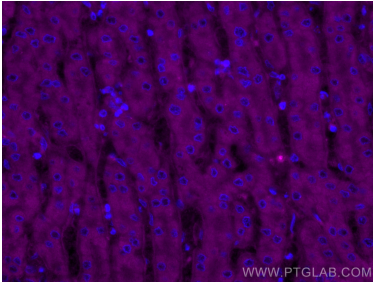
**Storage:**  
Store at -20°C. Avoid exposure to light.  
**Storage Buffer:**  
PBS with 50% Glycerol, 0.05% Proclin300, 0.5% BSA, pH 7.3.  
Aliquoting is unnecessary for -20°C storage

\*\*\* 20ul sizes contain 0.1% BSA

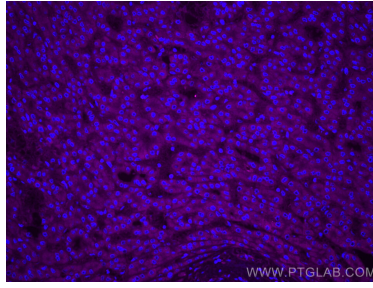
For technical support and original validation data for this product please contact:  
T: 1 (888) 4PTGLAB (1-888-478-4522) (toll free in USA), or 1(312) 455-8498 (outside USA)  
E: proteintech@ptglab.com  
W: ptglab.com

This product is exclusively available under Proteintech Group brand and is not available to purchase from any other manufacturer.

## Selected Validation Data



Immunofluorescent analysis of (4% PFA) fixed human liver cancer tissue using CoraLite® Plus 647 TINAGL1 antibody (CL647-12077) at dilution of 1:200.



Immunofluorescent analysis of (4% PFA) fixed human liver cancer tissue using CoraLite® Plus 647 TINAGL1 antibody (CL647-12077) at dilution of 1:200.