

For Research Use Only



CoraLite® Plus 647-conjugated DRP1 (C-terminal) Polyclonal antibody

Catalog Number: **CL647-12957**

Featured Product

Basic Information

Catalog Number: CL647-12957	GenBank Accession Number: BC024590	Purification Method: Antigen affinity purification
Size: 100ul , Concentration: 1000 µg/ml by Nanodrop;	GeneID (NCBI): 10059	Excitation/Emission maxima wavelengths: 654 nm / 674 nm
Source: Rabbit	Full Name: dynamin 1-like	
Isotype: IgG	Calculated MW: 710 aa, 79 kDa	
Immunogen Catalog Number: AG3644	Observed MW: 75-80 kDa	

Applications

Tested Applications:
FC (Intra)

Species Specificity:
human, mouse, rat

Background Information

DNM1L(Dynamin-1-like protein) , also known as dynamin-related protein 1 (DRP1), belongs to the dynamin family of large GTPases that mediate membrane remodeling during a variety of cellular processes. DNM1L has an important role in the division of growing mitochondria and peroxisomes and also mediates outer mitochondrial membrane fission in mammalian cells. DNM1L is ubiquitously expressed with abundant expression in skeletal muscle, heart, kidney and brain. Variable isoforms of DNM1L have been reported in a tissue-specific manner due to the alternative splicing.

Storage

Storage:
Store at -20°C. Avoid exposure to light. Stable for one year after shipment.

Storage Buffer:
PBS with 50% Glycerol, 0.05% Proclin300, 0.5% BSA, pH 7.3.

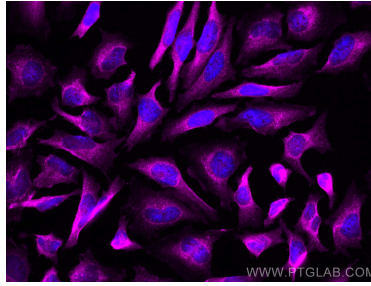
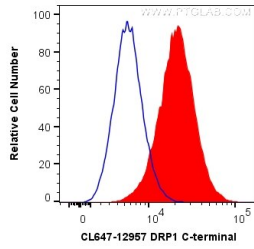
Aliquoting is unnecessary for -20°C storage

*** 20ul sizes contain 0.1% BSA

For technical support and original validation data for this product please contact:
T: 1 (888) 4PTGLAB (1-888-478-4522) (toll free in USA), or 1(312) 455-8498 (outside USA) E: proteintech@ptglab.com W: ptglab.com

This product is exclusively available under Proteintech Group brand and is not available to purchase from any other manufacturer.

Selected Validation Data



1×10^6 HeLa cells were intracellularly stained with 0.2 μ g CoraLite® Plus 647 Anti-Human DRP1 (C-terminal) (CL647-12957) (red), or 0.2 μ g Control Antibody (blue). Cells were fixed with 4% PFA and permeabilized with Flow Cytometry Perm Buffer (PF00011-C).

Immunofluorescent analysis of (4% PFA) fixed HeLa cells using CoraLite® Plus 647 DRP1 (C-terminal) antibody (CL647-12957) at dilution of 1:200.