

For Research Use Only

CoraLite® Plus 647-conjugated DNAJB1 Polyclonal antibody



Catalog Number: CL647-13174

Featured Product

Basic Information

Catalog Number: CL647-13174	GenBank Accession Number: BC019827	Purification Method: Antigen affinity purification
Size: 100ul , Concentration: 1000 µg/ml by Nanodrop;	GeneID (NCBI): 3337	Recommended Dilutions: IF 1:50-1:500
Source: Rabbit	Full Name: DnaJ (Hsp40) homolog, subfamily B, member 1	Excitation/Emission maxima wavelengths: 654 nm / 674 nm
Isotype: IgG	Calculated MW: 340 aa, 40 kDa	
Immunogen Catalog Number: AG3830	Observed MW: 37-40 kDa	

Applications

Tested Applications: FC (Intra), IF	Positive Controls: IF : HeLa cells,
Species Specificity: human, mouse, rat	

Background Information

DNAJB1 is a member of the heat shock 40 protein family and has been involved in a variety of cellular processes, including the proteasome pathway, endoplasmic reticulum stress and viral infection. DNAJB1-PRKACA gene fusions have been considered diagnostic for fibrolamellar hepatocellular carcinoma.

Storage

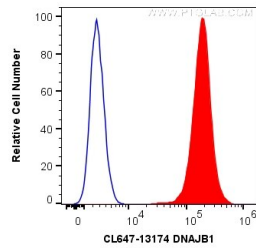
Storage:
Store at -20°C. Avoid exposure to light. Stable for one year after shipment.
Storage Buffer:
PBS with 50% Glycerol, 0.05% Proclin300, 0.5% BSA, pH 7.3.
Aliquoting is unnecessary for -20°C storage

*** 20ul sizes contain 0.1% BSA

For technical support and original validation data for this product please contact:
T: 1 (888) 4PTGLAB (1-888-478-4522) (toll free in USA), or 1(312) 455-8498 (outside USA)
E: proteintech@ptglab.com
W: ptglab.com

This product is exclusively available under Proteintech Group brand and is not available to purchase from any other manufacturer.

Selected Validation Data



1X10⁶ HeLa cells were intracellularly stained with 0.2 ug CoraLite® Plus 647 Anti-Human DNAJB1 (CL647-13174) (red), or 0.2 ug Control Antibody. Cells were fixed with 4% PFA and permeabilized with Flow Cytometry Perm Buffer (PF00011-C).



Immunofluorescent analysis of (4% PFA) fixed HeLa cells using CoraLite® Plus 647 DNAJB1 antibody (CL647-13174) at dilution of 1:200.