

For Research Use Only

CoraLite® Plus 647-conjugated GBP5 Polyclonal antibody

Catalog Number: CL647-13220

Featured Product

1 Publications



Basic Information

Catalog Number:

CL647-13220

Size:

100ul , Concentration: 1000 µg/ml by Nanodrop;

Source:

Rabbit

Isotype:

IgG

Immunogen Catalog Number:

AG4103

GenBank Accession Number:

BC031639

GeneID (NCBI):

115362

UNIPROT ID:

Q96PP8

Full Name:

guanylate binding protein 5

Calculated MW:

586 aa, 67 kDa

Observed MW:

65 kDa, 55 kDa

Purification Method:

Antigen affinity purification

Excitation/Emission maxima wavelengths:

654 nm / 674 nm

Applications

Tested Applications:

FC (Intra)

Cited Applications:

WB, IF

Species Specificity:

human

Background Information

Guanylate binding protein (GBP) 5 belongs to the GBP family, which is involved in important cellular processes, including signal transduction, translation, vesicle trafficking, and exocytosis. GBP5 was reported to be a critical cellular factor in inflammasome assembly. Furthermore, GBP5 has been reported to induce inflammatory cytokines, including IL-1 beta and IL-18, through the activation of NLRP3 and AIM2. GBP5 encodes two isoforms: GBP-5a/b (67 kDa) and GBP-5ta (55 kDa)

Notable Publications

Author	Pubmed ID	Journal	Application
Chuan-Yong Xiao	39405969	Ecotoxicol Environ Saf	WB,IF

Storage

Storage:

Store at -20°C. Avoid exposure to light. Stable for one year after shipment.

Storage Buffer:

PBS with 50% Glycerol, 0.05% Proclin300, 0.5% BSA, pH 7.3.

Aliquoting is unnecessary for -20°C storage

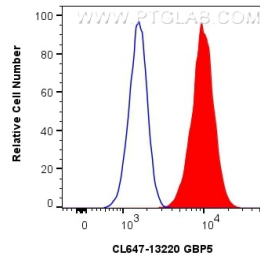
For technical support and original validation data for this product please contact:

T: 1 (888) 4PTGLAB (1-888-478-4522) (toll free in USA), or 1(312) 455-8498 (outside USA)

E: proteintech@ptglab.com
W: ptglab.com

This product is exclusively available under Proteintech Group brand and is not available to purchase from any other manufacturer.

Selected Validation Data



1x10⁶ MCF-7 cells were intracellularly stained with 0.4 ug CoraLite® Plus 647-conjugated GBP5 Polyclonal antibody (CL647-13220)(red), or 0.4 ug CoraLite® Plus 647-conjugated Rabbit IgG control Rabbit PolyAb (CL647-30000) (blue). Cells were fixed with 4% PFA and permeabilized with Flow Cytometry Perm Buffer (PF00011-C).