

For Research Use Only

CoraLite® Plus 647-conjugated RAB27B Polyclonal antibody



Catalog Number: CL647-13412

Featured Product

Basic Information

Catalog Number: CL647-13412	GenBank Accession Number: BC027474	Purification Method: Antigen affinity purification
Size: 100ul , Concentration: 1000 µg/ml by Nanodrop;	GeneID (NCBI): 5874	Recommended Dilutions: IF 1:50-1:500
Source: Rabbit	Full Name: RAB27B, member RAS oncogene family	Excitation/Emission maxima wavelengths: 654 nm / 674 nm
Isotype: IgG	Calculated MW: 218 aa, 25 kDa	
Immunogen Catalog Number: AG4064	Observed MW: 25-30 kDa	

Applications

Tested Applications: FC (Intra), IF	Positive Controls: IF : HeLa cells,
Species Specificity: human, mouse, rat	

Background Information

The Rab27 GTPase subfamily consists of two closely related homologs, Rab27a and Rab27b. Northern blot analysis revealed that Rab27b is expressed significantly only in testis, in which the predominant transcript was 1.4 kb in size. An 8-kb mRNA of unknown origin was detected in many tissues. Rab27b is associated with tubulovesicle membranes in the parietal cell and Rab27b may play a role in stimulation-associated membrane recruitment and gastric acid secretion. Rab27b is recently reported as a marker for breast cancer progression. It regulates invasive growth and metastasis in ER-positive breast cancer cell lines, and increased expression is associated with poor prognosis in humans.

Storage

Storage:
Store at -20°C. Avoid exposure to light. Stable for one year after shipment.
Storage Buffer:
PBS with 50% Glycerol, 0.05% Proclin300, 0.5% BSA, pH 7.3.
Aliquoting is unnecessary for -20°C storage

*** 20ul sizes contain 0.1% BSA

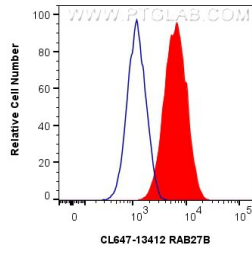
For technical support and original validation data for this product please contact:

T: 1 (888) 4PTGLAB (1-888-478-4522) (toll free
in USA), or 1(312) 455-8498 (outside USA)

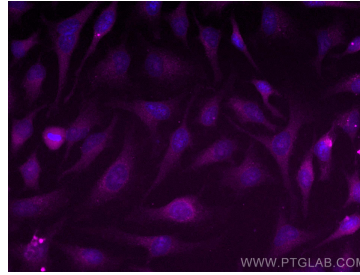
E: proteintech@ptglab.com
W: ptglab.com

This product is exclusively available under Proteintech Group brand and is not available to purchase from any other manufacturer.

Selected Validation Data



1×10^6 HeLa cells were intracellularly stained with 0.8 μ g CoraLite® Plus 647 Anti-Human RAB27B (CL647-13412) (red), or 0.8 μ g Isotype Control. Cells were fixed with 4% PFA and permeabilized with Flow Cytometry Perm Buffer (PF00011-C).



Immunofluorescent analysis of (-20°C Methanol) fixed HeLa cells using CoraLite® Plus 647 RAB27B antibody (CL647-13412) at dilution of 1:200.