

For Research Use Only

# CoraLite® Plus 647-conjugated PPP3CA Polyclonal antibody



Catalog Number: CL647-13422

## Basic Information

<b>Catalog Number:</b> CL647-13422	<b>GenBank Accession Number:</b> BC025714	<b>Purification Method:</b> Antigen affinity purification
<b>Size:</b> 100ul , Concentration: 1000 µg/ml by Nanodrop;	<b>GeneID (NCBI):</b> 5530	
<b>Source:</b> Rabbit	<b>Full Name:</b> protein phosphatase 3 (formerly 2B), catalytic subunit, alpha isoform	
<b>Isotype:</b> IgG	<b>Calculated MW:</b> 59 kDa	
<b>Immunogen Catalog Number:</b> AG4203	<b>Observed MW:</b> 59 kDa	

## Applications

**Tested Applications:**  
FC (Intra)

**Species Specificity:**  
human, mouse

## Background Information

PPP3CA, also called calcineurin A $\alpha$ , is the only serine/threonine protein phosphatase under the control of Ca $^{2+}$ /calmodulin, and plays a critical role in the coupling of Ca $^{2+}$  signals to cellular responses. Ca $^{2+}$  signaling plays a central role in hypertrophic growth of cardiac and skeletal muscle in response to mechanical load and a variety of signals. Therefore, PPP3CA plays an important role in muscle differentiation, especially in muscle fiber type conversion. It is also involved in osteoclast regulation, regulating bone formation through an effect on osteoblast differentiation.

## Storage

**Storage:**  
Store at -20°C. Avoid exposure to light. Stable for one year after shipment.

**Storage Buffer:**  
PBS with 50% Glycerol, 0.05% Proclin300, 0.5% BSA, pH 7.3.

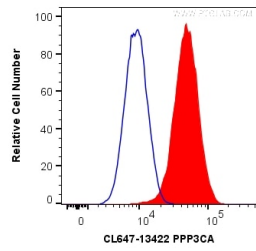
Aliquoting is unnecessary for -20°C storage

\*\*\* 20ul sizes contain 0.1% BSA

For technical support and original validation data for this product please contact:  
T: 1 (888) 4PTGLAB (1-888-478-4522) (toll free in USA), or 1(312) 455-8498 (outside USA) E: proteintech@ptglab.com W: ptglab.com

This product is exclusively available under Proteintech Group brand and is not available to purchase from any other manufacturer.

## Selected Validation Data



1X10<sup>6</sup> HeLa cells were intracellularly stained with 0.2 ug CoraLite® Plus 647 Anti-Human PPP3CA (CL647-13422) (red), or 0.2 ug Isotype Control (blue). Cells were fixed with 4% PFA and permeabilized with Flow Cytometry Perm Buffer (PF00011-C).