

For Research Use Only

# CoraLite® Plus 647-conjugated BOULE Polyclonal antibody

Catalog Number:CL647-13720



## Basic Information

<b>Catalog Number:</b> CL647-13720	<b>GenBank Accession Number:</b> BC033674	<b>Purification Method:</b> Antigen affinity purification
<b>Size:</b> 100ul , Concentration: 1000 ug/ml by Nanodrop;	<b>GeneID (NCBI):</b> 66037	<b>Recommended Dilutions:</b> IF-P 1:50-1:500
<b>Source:</b> Rabbit	<b>UNIPROT ID:</b> Q8N9W6	<b>Excitation/Emission maxima wavelengths:</b> 654 nm / 674 nm
<b>Isotype:</b> IgG	<b>Full Name:</b> bol, boule-like (Drosophila)	
<b>Immunogen Catalog Number:</b> AG4662	<b>Calculated MW:</b> 283 aa, 31 kDa	
	<b>Observed MW:</b> 38-42 kDa	

## Applications

<b>Tested Applications:</b> IF-P	<b>Positive Controls:</b> IF-P : mouse testis tissue,
<b>Species Specificity:</b> human, mouse, rat	

## Storage

**Storage:**  
Store at -20°C. Avoid exposure to light. Stable for one year after shipment.  
**Storage Buffer:**  
PBS with 50% Glycerol, 0.05% Proclin300, 0.5% BSA, pH 7.3.  
Aliquoting is unnecessary for -20°C storage

For technical support and original validation data for this product please contact:

T: 1 (888) 4PTGLAB (1-888-478-4522) (toll free in USA), or 1(312) 455-8498 (outside USA)

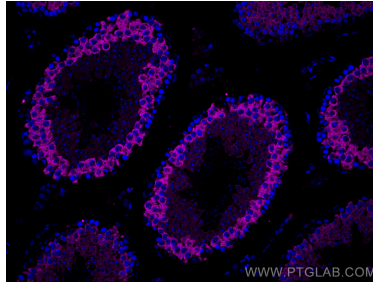
E: [proteintech@ptglab.com](mailto:proteintech@ptglab.com)  
W: [ptglab.com](http://ptglab.com)

This product is exclusively available under Proteintech Group brand and is not available to purchase from any other manufacturer.

## Selected Validation Data



Immunofluorescent analysis of (4% PFA) fixed paraffin-embedded mouse testis tissue using CoraLite® Plus 647 BOULE antibody (CL647-13720) at dilution of 1:200. Heat mediated antigen retrieval with Tris-EDTA buffer (pH 9.0).



Immunofluorescent analysis of (4% PFA) fixed paraffin-embedded mouse testis tissue using CoraLite® Plus 647 BOULE antibody (CL647-13720) at dilution of 1:200. Heat mediated antigen retrieval with Tris-EDTA buffer (pH 9.0).