

For Research Use Only

# CoraLite® Plus 647-conjugated 14-3-3 Polyclonal antibody



Catalog Number: CL647-14503

Featured Product

## Basic Information

**Catalog Number:**  
CL647-14503

**Size:**  
100ul , Concentration: 1 mg/mL by  
Nanodrop;

**Source:**  
Rabbit

**Isotype:**  
IgG

**Immunogen Catalog Number:**  
AG5959

**GenBank Accession Number:**  
BC056867

**GeneID (NCBI):**  
10971

**Full Name:**  
tyrosine 3-  
monooxygenase/tryptophan 5-  
monooxygenase activation protein,  
theta polypeptide

**Calculated MW:**  
28 kDa

**Observed MW:**  
31 kDa

**Purification Method:**  
Antigen affinity purification

**Excitation/Emission maxima  
wavelengths:**  
654 nm / 674 nm

## Applications

**Tested Applications:**  
FC (Intra)

**Species Specificity:**  
human, mouse, rat

## Background Information

14-3-3 proteins are the first phosphoserine/phosphothreonine-binding proteins to be discovered. 14-3-3 family members interact with a wide spectrum of proteins and possess diverse functions. Mammals express seven distinct 14-3-3 isoforms (gamma, epsilon, beta, zeta, sigma, theta, tau) that form multiple homo- and hetero-dimers. 14-3-3 proteins display the highest expression levels in the brain, and have been implicated in several neurodegenerative diseases, including Alzheimer's disease and amyotrophic lateral sclerosis.

## Storage

**Storage:**

Store at -20°C. Avoid exposure to light. Stable for one year after shipment.

**Storage Buffer:**

PBS with 50% Glycerol, 0.05% Proclin300, 0.5% BSA, pH 7.3.

Aliquoting is unnecessary for -20°C storage

**\*\*\* 20ul sizes contain 0.1% BSA**

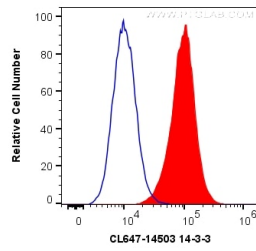
For technical support and original validation data for this product please contact:

T: 1 (888) 4PTGLAB (1-888-478-4522) (toll free  
in USA), or 1(312) 455-8498 (outside USA)

E: [proteintech@ptglab.com](mailto:proteintech@ptglab.com)  
W: [ptglab.com](http://ptglab.com)

**This product is exclusively available under Proteintech Group brand and is not available to purchase from any other manufacturer.**

## Selected Validation Data



1X10<sup>6</sup> HeLa cells were intracellularly stained with 0.2 ug Coralite® Plus 647 Anti-Human 14-3-3 (CL647-14503) (red), or 0.2 ug isotype control (blue). Cells were fixed with 4% PFA and permeabilized with Flow Cytometry Perm Buffer (PF00011-C).