

For Research Use Only

# CoraLite® Plus 647-conjugated MRPL12 Polyclonal antibody



Catalog Number: CL647-14795

Featured Product

## Basic Information

<b>Catalog Number:</b> CL647-14795	<b>GenBank Accession Number:</b> BC002344	<b>Purification Method:</b> Antigen affinity purification
<b>Size:</b> 100ul , Concentration: 1 mg/mL by Nanodrop;	<b>GeneID (NCBI):</b> 6182	<b>Excitation/Emission maxima wavelengths:</b> 654 nm / 674 nm
<b>Source:</b> Rabbit	<b>Full Name:</b> mitochondrial ribosomal protein L12	
<b>Isotype:</b> IgG	<b>Calculated MW:</b> 21 kDa	
<b>Immunogen Catalog Number:</b> AG6504	<b>Observed MW:</b> 21 kDa	

## Applications

**Tested Applications:**  
FC (Intra)

**Species Specificity:**  
human, mouse, rat

## Background Information

Mammalian MRPL12 was the first mitochondrial ribosomal protein to be characterized, and is encoded by a nuclear gene. The protein forms a homodimer, localizes predominantly to mitochondria and binds to the large mitochondrial ribosomal subunit [PMID:862670]. It is required for CycD/Cdk4-induced cell growth. In addition, forming a ribosomal stalk with MRPL7, MRPL12 is required for the recruitment of translation elongation factors Tu and G to the large ribosomal subunit [PMID:12370014]. It also a part of a novel regulatory mechanism that coordinates mitochondrial transcription with translation and/or ribosome biogenesis during human mitochondrial gene expression. The antibody reacts specifically with 21kDa MRPL12 protein.

## Storage

**Storage:**  
Store at -20°C. Avoid exposure to light. Stable for one year after shipment.

**Storage Buffer:**  
PBS with 50% Glycerol, 0.05% Proclin300, 0.5% BSA, pH 7.3.

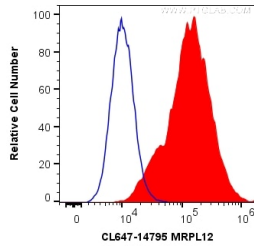
Aliquoting is unnecessary for -20°C storage

\*\*\* 20ul sizes contain 0.1% BSA

For technical support and original validation data for this product please contact:  
T: 1 (888) 4PTGLAB (1-888-478-4522) (toll free in USA), or 1(312) 455-8498 (outside USA) E: proteintech@ptglab.com W: ptglab.com

This product is exclusively available under Proteintech Group brand and is not available to purchase from any other manufacturer.

## Selected Validation Data



1X10<sup>6</sup> HeLa cells were intracellularly stained with 0.2 ug Coralite® Plus 647 Anti-Human MRPL12 (CL647-14795) (red), or 0.2 ug isotype control (blue). Cells were fixed with 4% PFA and permeabilized with Flow Cytometry Perm Buffer (PF00011-C).