

For Research Use Only



CoraLite® Plus 647-conjugated Thymidylate synthase Polyclonal antibody

Catalog Number: **CL647-15047**

Featured Product

Basic Information

Catalog Number: CL647-15047	GenBank Accession Number: BC002567	Purification Method: Antigen affinity purification
Size: 100ul , Concentration: 1000 µg/ml by Nanodrop;	GeneID (NCBI): 7298	Recommended Dilutions: IF/ICC 1:50-1:500
Source: Rabbit	UNIPROT ID: P04818	Excitation/Emission maxima wavelengths: 654 nm / 674 nm
Isotype: IgG	Full Name: thymidylate synthetase	
Immunogen Catalog Number: AG7027	Calculated MW: 36 kDa	
	Observed MW: 32-36 kDa	

Applications

Tested Applications: IF/ICC, FC (Intra)	Positive Controls: IF/ICC : HeLa cells,
Species Specificity: human, mouse, rat	

Background Information

Thymidylate synthase gene (TYMS) encodes thymidylate synthase (TS) which is an important factor in the growth of tumor cells. TS can catalyze the transformation of intracellular uridine monophosphate (UMP) into dTMP which is required for DNA replication and repairing. TS is a key enzyme in the process of cell proliferation, also is the important target enzymes of 5-FU and other chemotherapy drugs. The expression of TYMS is negatively correlated with the efficacy of chemotherapy and the prognosis of patients who suffer from rectal cancer, breast cancer, colorectal cancer, gastric cancer, head and neck cancer, esophageal cancer, pancreatic cancer and so on.

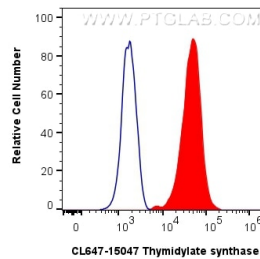
Storage

Storage:
Store at -20°C. Avoid exposure to light. Stable for one year after shipment.
Storage Buffer:
PBS with 50% Glycerol, 0.05% Proclin300, 0.5% BSA, pH 7.3.
Aliquoting is unnecessary for -20°C storage

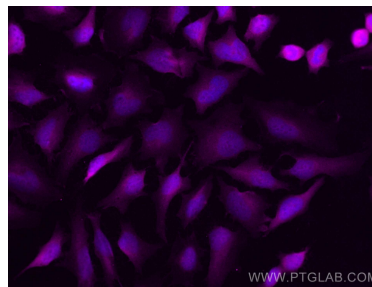
For technical support and original validation data for this product please contact:
T: 1 (888) 4PTGLAB (1-888-478-4522) (toll free in USA), or 1(312) 455-8498 (outside USA)
E: proteintech@ptglab.com
W: ptglab.com

This product is exclusively available under Proteintech Group brand and is not available to purchase from any other manufacturer.

Selected Validation Data



1X10⁶ HeLa cells were intracellularly stained with 0.4 ug CoraLite® Plus 647 Anti-Human Thymidylate synthase (CL647-15047) (red), or 0.4 ug CoraLite® Plus 647-conjugated Rabbit IgG control Rabbit PolyAb (CL647-30000) (blue). Cells were fixed with 4% PFA and permeabilized with Flow Cytometry Perm Buffer (PF00011-C).



Immunofluorescent analysis of (4% PFA) fixed HeLa cells using CoraLite® Plus 647 Thymidylate synthase antibody (CL647-15047) at dilution of 1:200.