

For Research Use Only



# CoraLite® Plus 647-conjugated Transgelin-2-specific Polyclonal antibody

Catalog Number: **CL647-15508**

## Featured Product

### Basic Information

Catalog Number:

CL647-15508

Size:

100ul , Concentration: 1000 µg/ml by 8407

Nanodrop;

Source:

Rabbit

Isotype:

IgG

GenBank Accession Number:

NM\_003564

GeneID (NCBI):

8407

UNIPROT ID:

P37802

Full Name:

transgelin 2

Calculated MW:

22 kDa

Observed MW:

22 kDa

Purification Method:

Antigen affinity purification

Recommended Dilutions:

IF/ICC 1:50-1:500

Excitation/Emission maxima wavelengths:

654 nm / 674 nm

### Applications

Tested Applications:

IF/ICC, FC (Intra)

Species Specificity:

human

Positive Controls:

IF/ICC : HepG2 cells,

### Background Information

The transgelin family is a group of proteins that belong to 22 kDa actin-related corpnin superfamily. Of all three isoforms, transgelin 1 is the best characterized. Transgelin 1, also known as SM22 alpha, is a specific marker for differentiated smooth muscle cells. Transgelin 2, also known as SM22 beta, is expressed by both smooth muscle and non-smooth muscle cells in a temporally and spatially regulated pattern. Transgelin 3, also known as NP25, is only found in highly differentiated neuronal cells. This antibody can bind transgelin 2 specifically, but not transgelin 1 or 3.

### Storage

Storage:

Store at -20°C. Avoid exposure to light. Stable for one year after shipment.

Storage Buffer:

PBS with 50% Glycerol, 0.05% Proclin300, 0.5% BSA, pH 7.3.

Aliquoting is unnecessary for -20°C storage

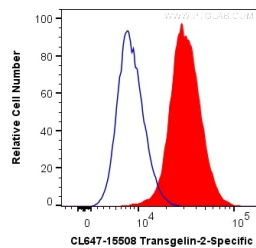
For technical support and original validation data for this product please contact:

T: 1 (888) 4PTGLAB (1-888-478-4522) (toll free in USA), or 1(312) 455-8498 (outside USA)

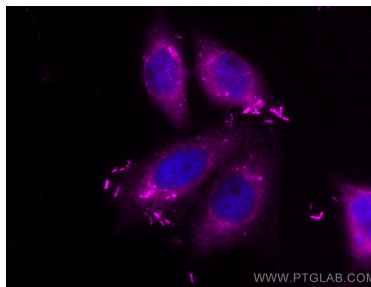
E: [proteintech@ptglab.com](mailto:proteintech@ptglab.com)  
W: [ptglab.com](http://ptglab.com)

This product is exclusively available under Proteintech Group brand and is not available to purchase from any other manufacturer.

## Selected Validation Data



1X10<sup>6</sup> HepG2 cells were intracellularly stained with 0.2  $\mu$ g CoraLite® Plus 647 Anti-Human Transgelin-2-specific (CL647-15508) (red), or 0.2  $\mu$ g Control Antibody (blue). Cells were fixed with 4% PFA and permeabilized with Flow Cytometry Perm Buffer (PF00011-C).



Immunofluorescent analysis of (4% PFA) fixed HepG2 cells using CoraLite® Plus 647 Transgelin-2-specific antibody (CL647-15508) at dilution of 1:200.