

For Research Use Only

CoraLite® Plus 647-conjugated Glucagon Polyclonal antibody

Catalog Number: CL647-15954

1 Publications



Basic Information

Catalog Number:

CL647-15954

Size:

100ul , Concentration: 1000 ug/ml by 2641

Nanodrop;

Source:

Rabbit

Isotype:

IgG

Immunogen Catalog Number:

AG8677

GenBank Accession Number:

BC005278

GeneID (NCBI):

2641

UNIPROT ID:

P01275

Full Name:

glucagon

Calculated MW:

180 aa, 21 kDa

Purification Method:

Antigen affinity purification

Recommended Dilutions:

IF-P 1:50-1:500

Excitation/Emission maxima
wavelengths:

654 nm / 674 nm

Applications

Tested Applications:

IF-P

Cited Applications:

IF

Species Specificity:

human, mouse, rat

Cited Species:

mouse

Positive Controls:

IF-P : mouse pancreas tissue, human pancreas cancer
tissue

Background Information

Glucagon is a 29-amino acid peptide hormone secreted from the pancreatic alpha cells with a powerful stimulatory effect on hepatic glucose production acting to increase plasma glucose levels. Glucagon is best known as the counter-regulatory hormone to insulin, and normal glucose homeostasis depends largely on the balanced secretion of insulin and glucagon from the pancreatic beta and alpha cells, respectively. The regulation of glucose metabolism by glucagon is mediated by its direct action on the peripheral tissues such as the liver and also by the brain. Glucagon is also released postprandially in a transient manner, which was shown to be involved in inhibition of food intake via reduction of meal size.

Notable Publications

| Author | Pubmed ID | Journal | Application |
|------------|-----------|---------|-------------|
| Manxi Yang | 39282328 | bioRxiv | IF |

Storage

Storage:

Store at -20°C. Avoid exposure to light. Stable for one year after shipment.

Storage Buffer:

PBS with 50% Glycerol, 0.05% Proclin300, 0.5% BSA, pH 7.3.

Aliquoting is unnecessary for -20°C storage

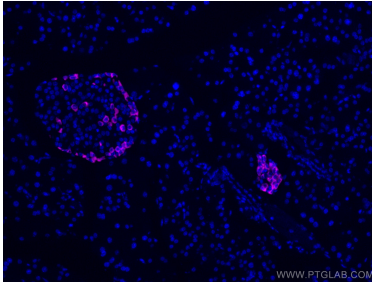
For technical support and original validation data for this product please contact:

T: 1 (888) 4PTGLAB (1-888-478-4522) (toll free
in USA), or 1(312) 455-8498 (outside USA)

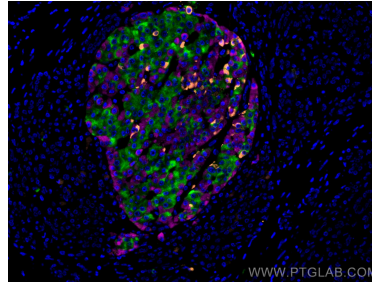
E: proteintech@ptglab.com
W: ptglab.com

This product is exclusively available under Proteintech
Group brand and is not available to purchase from any
other manufacturer.

Selected Validation Data



Immunofluorescent analysis of (4% PFA) fixed mouse pancreas tissue using Coralite® Plus 647 Glucagon antibody (CL647-15954) at dilution of 1:200.



Immunofluorescent analysis of (4% PFA) fixed human pancreas cancer tissue using Coralite® Plus 647 Glucagon antibody (CL647-15954) at dilution of 1:200, Coralite®488 INS antibody (CL488-66198, Clone: 4B6A7, green), SSTR2 antibody (20404-1-AP, orange).