

For Research Use Only

CoraLite® Plus 647-conjugated GS28 Polyclonal antibody



Catalog Number:CL647-16106

Basic Information

Catalog Number: CL647-16106	GenBank Accession Number: BC012620	Purification Method: Antigen affinity purification
Size: 100ul , Concentration: 1000 µg/ml by Nanodrop;	GeneID (NCBI): 9527	Excitation/Emission maxima wavelengths: 654 nm / 674 nm
Source: Rabbit	Full Name: golgi SNAP receptor complex member 1	
Isotype: IgG	Calculated MW: 28.6 kDa	
Immunogen Catalog Number: AG9021	Observed MW: 28 kDa	

Applications

Tested Applications:
FC (Intra)

Species Specificity:
human, mouse, rat

Background Information

GS28, also known as GOSR1, is a 28-kDa Golgi SNARE protein that participates in ER-Golgi and intra-Golgi transport. GS28 is considered to be a core component of the Golgi SNARE complex. (PMID: 8638159)

Storage

Storage:
Store at -20°C. Avoid exposure to light. Stable for one year after shipment.

Storage Buffer:
PBS with 50% Glycerol, 0.05% Proclin300, 0.5% BSA, pH 7.3.

Aliquoting is unnecessary for -20°C storage

***** 20ul sizes contain 0.1% BSA**

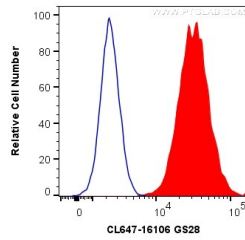
For technical support and original validation data for this product please contact:

T: 1 (888) 4PTGLAB (1-888-478-4522) (toll free
in USA), or 1(312) 455-8498 (outside USA)

E: proteintech@ptglab.com
W: ptglab.com

This product is exclusively available under Proteintech Group brand and is not available to purchase from any other manufacturer.

Selected Validation Data



1X10⁶ HeLa cells were intracellularly stained with 0.2 ug Coralite® Plus 647 Anti-Human GS28 (CL647-16106) (red), or 0.2 ug isotype control (blue). Cells were fixed with 4% PFA and permeabilized with Flow Cytometry Perm Buffer (PF00011-C).