

For Research Use Only

CoraLite® Plus 647-conjugated IgD Polyclonal antibody



Catalog Number: CL647-16489

Basic Information

Catalog Number:

CL647-16489

Size:

100ul , Concentration: 1000 µg/ml by
Nanodrop;

Source:

Rabbit

Isotype:

IgG

Immunogen Catalog Number:

AG9614

GenBank Accession Number:

BC021276

GeneID (NCBI):

3495

Full Name:

immunoglobulin heavy constant
delta

Calculated MW:

573 aa, 63 kDa

Purification Method:

Antigen affinity purification

Recommended Dilutions:

IF 1:200-1:800

Excitation/Emission maxima
wavelengths:

654 nm / 674 nm

Applications

Tested Applications:

IF

Species Specificity:

human

Positive Controls:

IF : human tonsillitis tissue,

Background Information

IgD is the major antigen receptor isotype on the surface of most peripheral B-cells, where it is coexpressed with IgM. The membrane-bound IgD (mIgD) induces the phosphorylation of CD79A and CD79B by the Src family of protein tyrosine kinases. This antibody recognize the heavy chain (~60 kDa) of IgD.

Storage

Storage:

Store at -20°C. Avoid exposure to light.

Storage Buffer:

PBS with 50% Glycerol, 0.05% Proclin300, 0.5% BSA, pH 7.3.

Aliquoting is unnecessary for -20°C storage

*** 20ul sizes contain 0.1% BSA

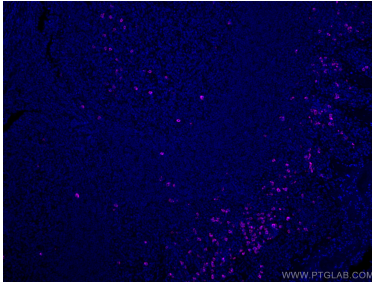
For technical support and original validation data for this product please contact:

T: 1 (888) 4PTGLAB (1-888-478-4522) (toll free
in USA), or 1(312) 455-8498 (outside USA)

E: proteintech@ptglab.com
W: ptglab.com

This product is exclusively available under Proteintech Group brand and is not available to purchase from any other manufacturer.

Selected Validation Data



Immunofluorescent analysis of (4% PFA) fixed human tonsillitis tissue using CoraLite®647 human IgD antibody (CL647-16489) at dilution of 1:200.