

For Research Use Only

CoraLite® Plus 647-conjugated Synaptophysin Polyclonal antibody

Catalog Number: CL647-17785



Basic Information

Catalog Number: CL647-17785	GenBank Accession Number: BC064550	Purification Method: Antigen affinity purification
Size: 100ul , Concentration: 1000 µg/ml by Nanodrop;	GeneID (NCBI): 6855	Recommended Dilutions: IF 1:50-1:500
Source: Rabbit	Full Name: synaptophysin	Excitation/Emission maxima wavelengths: 650 nm / 665 nm
Isotype: IgG	Calculated MW: 313 aa, 34 kDa	
Immunogen Catalog Number: AG11781	Observed MW: 38-40 kDa	

Applications

Tested Applications: FC (Intra), IF	Positive Controls: IF : mouse pancreas tissue, mouse brain tissue
Species Specificity: human, mouse	

Background Information

Synaptophysin (SYP, also known as major synaptic vesicle protein p38) is a 38-kDa integral membrane glycoprotein that regulates synaptic vesicle endocytosis. It is the most abundant synaptic vesicle protein by mass. Synaptophysin is present in neuroendocrine cells and neurons that participate in synaptic transmission. Synaptophysin is a useful marker for identification of neuroendocrine cells and neoplasms. (PMID: 3010302; 21658579)

Storage

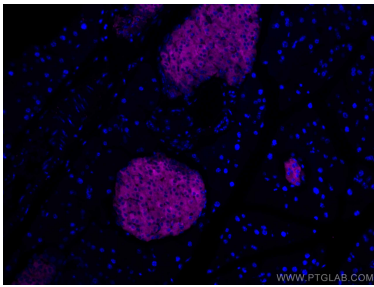
Storage:
Store at -20°C. Avoid exposure to light.
Storage Buffer:
PBS with 50% Glycerol, 0.05% Proclin300, 0.5% BSA, pH 7.3.
Aliquoting is unnecessary for -20°C storage

*** 20ul sizes contain 0.1% BSA

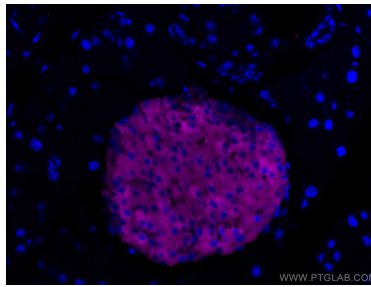
For technical support and original validation data for this product please contact:
T: 1 (888) 4PTGLAB (1-888-478-4522) (toll free in USA), or 1(312) 455-8498 (outside USA)
E: proteintech@ptglab.com
W: ptglab.com

This product is exclusively available under Proteintech Group brand and is not available to purchase from any other manufacturer.

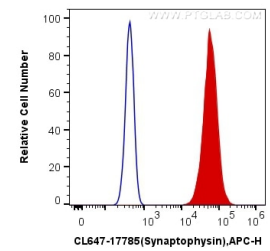
Selected Validation Data



Immunofluorescent analysis of (4% PFA) fixed mouse pancreas tissue using Coralite® Plus 647 Synaptophysin antibody (CL647-17785) at dilution of 1:200.



Immunofluorescent analysis of (4% PFA) fixed mouse pancreas tissue using Coralite® Plus 647 Synaptophysin antibody (CL647-17785) at dilution of 1:200.



1X10⁶ PC-12 cells were intracellularly stained with 0.4 ug Coralite® Plus 647 Anti-Human Synaptophysin (CL647-17785) (red), or 0.4 ug Control Antibody. Cells were fixed with 4% PFA and permeabilized with Flow Cytometry Perm Buffer (PF00011-C).