

For Research Use Only

CoraLite® Plus 647-conjugated ITPR1-specific Polyclonal antibody



Catalog Number: CL647-19962

Basic Information

Catalog Number: CL647-19962	GenBank Accession Number: NM_001099952	Purification Method: Antigen affinity purification
Size: 100ul , Concentration: 1000 µg/mL by Nanodrop;	GeneID (NCBI): 3708	Excitation/Emission maxima wavelengths: 654 nm / 674 nm
Source: Rabbit	Full Name: inositol 1,4,5-triphosphate receptor, type 1	
Isotype: IgG	Calculated MW: 314 kDa	
	Observed MW: 290-300 kDa	

Applications

Tested Applications:
FC (Intra)

Species Specificity:
human, mouse, rat

Background Information

ITPR1, also named as INSP3R1 and IP3R, belongs to the InsP3 receptor family. It is a receptor for inositol 1,4,5-trisphosphate which is a second messenger that mediates the release of intracellular calcium. Defects in ITPR1 are the cause of spinocerebellar ataxia type 15 (SCA15). The antibody has no cross reaction with ITPR2 and ITPR3.

Storage

Storage:
Store at -20°C. Avoid exposure to light. Stable for one year after shipment.

Storage Buffer:
PBS with 50% Glycerol, 0.05% Proclin300, 0.5% BSA, pH 7.3.

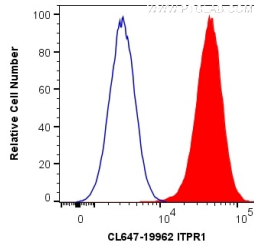
Aliquoting is unnecessary for -20°C storage

*** 20ul sizes contain 0.1% BSA

For technical support and original validation data for this product please contact:
T: 1 (888) 4PTGLAB (1-888-478-4522) (toll free in USA), or 1(312) 455-8498 (outside USA) E: proteintech@ptglab.com W: ptglab.com

This product is exclusively available under Proteintech Group brand and is not available to purchase from any other manufacturer.

Selected Validation Data



1X10⁶ HepG2 cells were intracellularly stained with 0.2 ug CoraLite® Plus 647 Anti-Human ITPR1-specific (CL647-19962) (red), or 0.2 ug CoraLite® Plus 647-conjugated Rabbit IgG Isotype Control (CL647-30000) (blue). Cells were fixed with 4% PFA and permeabilized with Flow Cytometry Perm Buffer (PF00011-C).