

For Research Use Only

CoraLite® Plus 647-conjugated IgG Lambda Light Chain Polyclonal antibody

Catalog Number: CL647-20758



Basic Information

Catalog Number: CL647-20758	GenBank Accession Number: BC007782	Purification Method: Antigen affinity purification
Size: 100ul , Concentration: 1000 ug/ml by Nanodrop;	GeneID (NCBI): 3537	Recommended Dilutions: IF-P 1:50-1:500
Source: Rabbit	Full Name: immunoglobulin lambda constant 1 (Mcg marker)	Excitation/Emission maxima wavelengths: 654 nm / 674 nm
Isotype: IgG	Calculated MW: 233 aa, 25 kDa	
Immunogen Catalog Number: AG14693	Observed MW: 25 kDa	

Applications

Tested Applications: IF-P	Positive Controls: IF-P : human tonsillitis tissue,
Species Specificity: human	

Background Information

This antibody detects the lambda light chain of human IgG.

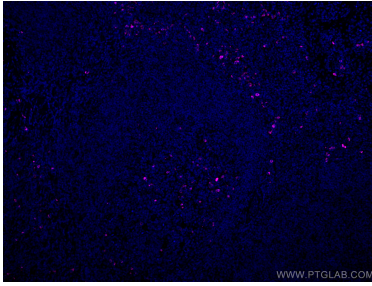
Storage

Storage:
Store at -20°C. Avoid exposure to light. Stable for one year after shipment.
Storage Buffer:
PBS with 50% Glycerol, 0.05% Proclin300, 0.5% BSA, pH 7.3.
Aliquoting is unnecessary for -20°C storage

For technical support and original validation data for this product please contact:
T: 1 (888) 4PTGLAB (1-888-478-4522) (toll free in USA), or 1(312) 455-8498 (outside USA)
E: proteintech@ptglab.com
W: ptglab.com

This product is exclusively available under Proteintech Group brand and is not available to purchase from any other manufacturer.

Selected Validation Data



Immunofluorescent analysis of (4% PFA) fixed human tonsillitis tissue using CoraLite® Plus 647 IgG Lambda Light Chain antibody (CL647-20758) at dilution of 1:200.