

For Research Use Only

# CoraLite® Plus 647-conjugated ATP1B2 Polyclonal antibody

Catalog Number: CL647-22338



## Basic Information

### Catalog Number:

CL647-22338

### Size:

100ul , Concentration: 1000 ug/ml by Nanodrop;

### Source:

Rabbit

### Isotype:

IgG

### Immunogen Catalog Number:

AG17818

### GenBank Accession Number:

BC126175

### GeneID (NCBI):

482

### UNIPROT ID:

P14415

### Full Name:

ATPase, Na<sup>+</sup>/K<sup>+</sup> transporting, beta 2 polypeptide

### Calculated MW:

290 aa, 33 kDa

### Observed MW:

45-65 kDa

### Purification Method:

Antigen affinity purification

### Recommended Dilutions:

IF-P 1:50-1:500

### Excitation/Emission maxima wavelengths:

654 nm / 674 nm

## Applications

### Tested Applications:

IF-P

### Species Specificity:

human, mouse, rat

### Positive Controls:

IF-P: mouse brain tissue,

## Background Information

ATP1B2 is the  $\beta 2$  subunit of Na<sup>+</sup>/K<sup>+</sup>-ATPase which is an essential membrane-bound enzyme responsible for the transport of Na<sup>+</sup> and K<sup>+</sup> in most eukaryotic cells. ATP1B2 is also called the adhesion molecule on glia (AMOG) and it is highly expressed in normal glia. It is a heavily glycosylated protein that plays a role in cellular adhesion in the CNS. Recently differential expression of ATP1B2 has been found in some glioneuronal tumors (PMID: 23887941, 19371356). This antibody recognizes the endogenous ATP1B2 protein in human brain. The bands between 45 kDa and 65 kDa represent the glycosylated forms of ATP1B2 in different levels (PMID: 8918259).

## Storage

### Storage:

Store at -20°C. Avoid exposure to light. Stable for one year after shipment.

### Storage Buffer:

PBS with 50% Glycerol, 0.05% Proclin300, 0.5% BSA, pH 7.3.

Aliquoting is unnecessary for -20°C storage

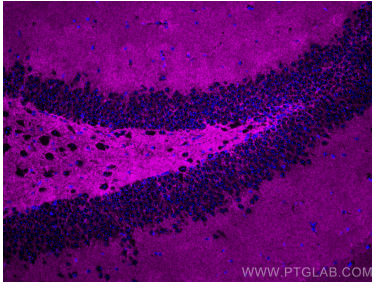
For technical support and original validation data for this product please contact:

T: 1 (888) 4PTGLAB (1-888-478-4522) (toll free in USA), or 1(312) 455-8498 (outside USA)

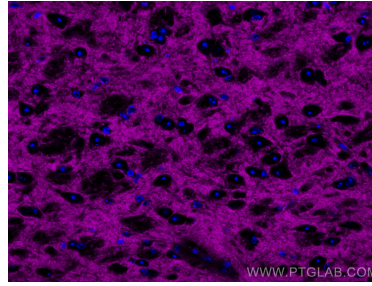
E: [proteintech@ptglab.com](mailto:proteintech@ptglab.com)  
W: [ptglab.com](http://ptglab.com)

This product is exclusively available under Proteintech Group brand and is not available to purchase from any other manufacturer.

## Selected Validation Data



Immunofluorescent analysis of (4% PFA) fixed paraffin-embedded mouse brain tissue using CoraLite® Plus 647 ATP1B2 antibody (CL647-22338) at dilution of 1:200. Heat mediated antigen retrieval with Tris-EDTA buffer (pH 9.0).



Immunofluorescent analysis of (4% PFA) fixed paraffin-embedded mouse brain tissue using CoraLite® Plus 647 ATP1B2 antibody (CL647-22338) at dilution of 1:200. Heat mediated antigen retrieval with Tris-EDTA buffer (pH 9.0).