

For Research Use Only

# CoraLite® Plus 647-conjugated RELB Polyclonal antibody



Catalog Number: CL647-25027

## Basic Information

<b>Catalog Number:</b> CL647-25027	<b>GenBank Accession Number:</b> BC028013	<b>Purification Method:</b> Antigen affinity purification
<b>Size:</b> 100ul , Concentration: 1000 µg/ml by Nanodrop;	<b>GeneID (NCBI):</b> 5971	<b>Excitation/Emission maxima wavelengths:</b> 654 nm / 674 nm
<b>Source:</b> Rabbit	<b>Full Name:</b> v-rel reticuloendotheliosis viral oncogene homolog B	
<b>Isotype:</b> IgG	<b>Calculated MW:</b> 62 kDa	
<b>Immunogen Catalog Number:</b> AG13824	<b>Observed MW:</b> 62-65 kDa	

## Applications

**Tested Applications:**  
FC (Intra)  
**Species Specificity:**  
human

## Background Information

RELB, also named as Transcription factor RelB, is a 579 amino acid protein, which contains one RHD domain. RELB localizes in the nucleus and cytoplasm. RELB is a pleiotropic transcription factor which is present in almost all cell types and is involved in many biological processes such as inflammation, immunity, differentiation, cell growth, tumorigenesis and apoptosis.

## Storage

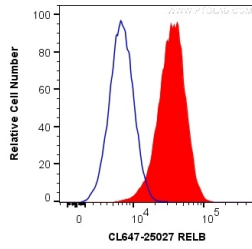
**Storage:**  
Store at -20°C. Avoid exposure to light. Stable for one year after shipment.  
**Storage Buffer:**  
PBS with 50% Glycerol, 0.05% Proclin300, 0.5% BSA, pH 7.3.  
Aliquoting is unnecessary for -20°C storage

**\*\*\* 20ul sizes contain 0.1%BSA**

For technical support and original validation data for this product please contact:  
T: 1 (888) 4PTGLAB (1-888-478-4522) (toll free in USA), or 1(312) 455-8498 (outside USA)  
E: proteintech@ptglab.com  
W: ptglab.com

This product is exclusively available under Proteintech Group brand and is not available to purchase from any other manufacturer.

## Selected Validation Data



1X10<sup>6</sup> HeLa cells were intracellularly stained with 0.2 ug CoraLite® Plus 647 Anti-Human RELB (CL647-25027) (red), or 0.2 ug Isotype Control (blue). Cells were fixed with 4% PFA and permeabilized with Flow Cytometry Perm Buffer (PF00011-C).