

For Research Use Only

CoraLite® Plus 647-conjugated DLL3 Polyclonal antibody



Catalog Number: CL647-25535

Basic Information

Catalog Number: CL647-25535	GenBank Accession Number: BC000218	Purification Method: Antigen affinity purification
Size: 100ul , Concentration: 1000 µg/ml by Nanodrop;	GeneID (NCBI): 10683	Recommended Dilutions: IF 1:200-1:800
Source: Rabbit	UNIPROT ID: Q9NYJ7	Excitation/Emission maxima wavelengths: 654 nm / 674 nm
Isotype: IgG	Full Name: delta-like 3 (Drosophila)	
Immunogen Catalog Number: AG21965	Calculated MW: 65 kDa	
	Observed MW: 65 kDa	

Applications

Tested Applications: IF, FC (Intra)	Positive Controls: IF : mouse brain tissue,
Species Specificity: human, mouse	

Background Information

The Delta-Notch pathway is an evolutionarily conserved signaling pathway which controls a broad range of developmental processes including cell fate determination, terminal differentiation and proliferation (PMID: 22353464). In mammals, four Notch receptors (NOTCH1-4) and five activating canonical ligands (JAGGED1, JAGGED2, DLL1, DLL3 and DLL4) have been described (PMID: 22353464). DLL3 is an inhibitory ligand of the Notch signaling pathway that is predominantly localizes to the Golgi apparatus (PMID: 17664336) in normal condition. Normal tissue expression of DLL3 is highest in fetal brain, and DLL3 plays a key role in somitogenesis in the paraxial mesoderm (PMID: 26311731). It has been reported that DLL3 is expressed on the surface of tumor cells of small cell lung cancer (SCLC) and high-grade neuroendocrine carcinomas (LCNEC) and has emerged as a novel therapeutic target (PMID: 26311731; 28487384).

Storage

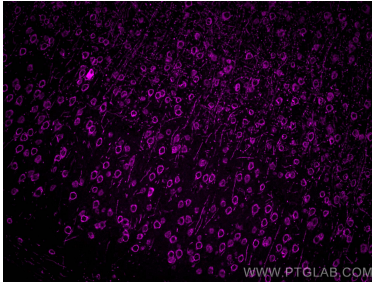
Storage:
Store at -20°C. Avoid exposure to light. Stable for one year after shipment.
Storage Buffer:
PBS with 50% Glycerol, 0.05% Proclin300, 0.5% BSA, pH 7.3.
Aliquoting is unnecessary for -20°C storage

*** 20ul sizes contain 0.1% BSA

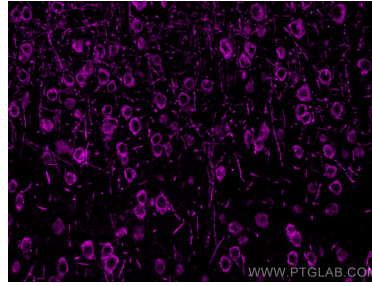
For technical support and original validation data for this product please contact:
T: 1 (888) 4PTGLAB (1-888-478-4522) (toll free in USA), or 1(312) 455-8498 (outside USA)
E: proteintech@ptglab.com
W: ptglab.com

This product is exclusively available under Proteintech Group brand and is not available to purchase from any other manufacturer.

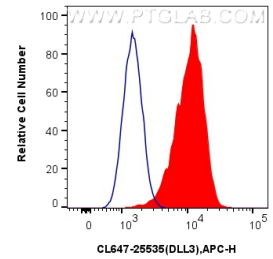
Selected Validation Data



Immunofluorescent analysis of (4% PFA) fixed mouse brain tissue using CoraLite® Plus 647 DLL3 antibody (CL647-25535) at dilution of 1:400.



Immunofluorescent analysis of (4% PFA) fixed mouse brain tissue using CoraLite® Plus 647 DLL3 antibody (CL647-25535) at dilution of 1:400.



1X10⁶ U-87 MG cells were intracellularly stained with 0.4 ug CoraLite® Plus 647 Anti-Human DLL3 (CL647-25535) and CoraLite®488-Conjugated AffiniPure Goat Anti-Rabbit IgG(H+L) at dilution 1:1000 (red), or 0.4 ug CoraLite® Plus 647-conjugated Rabbit IgG control Rabbit PolyAb (CL647-30000, Clone:) (blue). Cells were fixed with 4% PFA and permeabilized with Flow Cytometry Perm Buffer (PF00011-C).