

For Research Use Only

# CoraLite® Plus 647-conjugated LHCGR Polyclonal antibody

Catalog Number: CL647-26424

Featured Product



## Basic Information

Catalog Number:

CL647-26424

Size:

100ul, Concentration: 1000 ug/ml by Nanodrop;

Source:

Rabbit

Isotype:

IgG

Immunogen Catalog Number:

AG19259

GenBank Accession Number:

BC157028

GeneID (NCBI):

3973

UNIPROT ID:

P22888

Full Name:

LHCGR

Calculated MW:

699 aa, 79 kDa

Observed MW:

100 kDa

Purification Method:

Antigen affinity purification

Recommended Dilutions:

IF-P 1:50-1:500

Excitation/Emission maxima wavelengths:

654 nm / 674 nm

## Applications

Tested Applications:

IF-P

Species Specificity:

human, mouse

Positive Controls:

IF-P: mouse ovary tissue,

## Background Information

LHCGR, also known as LHR or LSHR, belongs to the rhodopsin-like family of G protein-coupled receptors (GPCRs) and plays a crucial role in the regulation of gonadal functions by stimulating steroidogenesis in response to luteinizing hormone (LH) or hCG (PMID: 15866423). Mutations in LHCGR gene result in familial male-limited precocious puberty, Leydig cell hypoplasia, and empty follicle syndrome (PMID: 30711030). LHCGR protein consists of 699 amino acids with a calculated molecular weight of 79 kDa. Due to massive glycosylation, the molecular mass of the mature LHCGR is higher (85-100 kDa) than the predicted molecular protein mass of 79 kDa (PMID: 23686864; 15866423; 29075189; 15969756).

## Storage

Storage:

Store at -20°C. Avoid exposure to light. Stable for one year after shipment.

Storage Buffer:

PBS with 50% Glycerol, 0.05% Proclin300, 0.5% BSA, pH 7.3.

Aliquoting is unnecessary for -20°C storage

For technical support and original validation data for this product please contact:

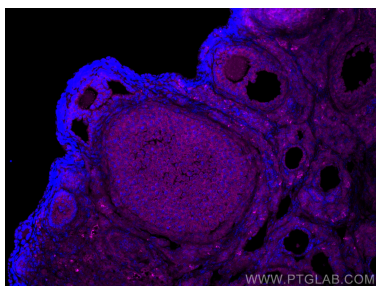
T: 1 (888) 4PTGLAB (1-888-478-4522) (toll free in USA), or 1(312) 455-8498 (outside USA)

E: [proteintech@ptglab.com](mailto:proteintech@ptglab.com)

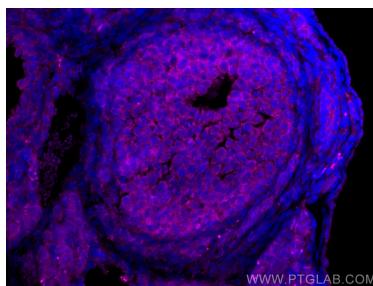
W: [ptglab.com](http://ptglab.com)

This product is exclusively available under Proteintech Group brand and is not available to purchase from any other manufacturer.

## Selected Validation Data



Immunofluorescent analysis of (4% PFA) fixed mouse ovary tissue using CoraLite® Plus 647 LHCGR antibody (CL647-26424) at dilution of 1:200.



Immunofluorescent analysis of (4% PFA) fixed mouse ovary tissue using CoraLite® Plus 647 LHCGR antibody (CL647-26424) at dilution of 1:200.