

For Research Use Only

CoraLite® Plus 647-conjugated Bcl-XL Polyclonal antibody



Catalog Number:CL647-26967

Basic Information

Catalog Number: CL647-26967	GenBank Accession Number: BC019307	Purification Method: Antigen affinity purification
Size: 100ul , Concentration: 1000 µg/ml by Nanodrop;	GeneID (NCBI): 598	Recommended Dilutions: IF 1:50-1:500
Source: Rabbit	UNIPROT ID: Q07817	Excitation/Emission maxima wavelengths: 654 nm / 674 nm
Isotype: IgG	Full Name: BCL2-like 1	
Immunogen Catalog Number: AG25604	Calculated MW: 26 kDa	
	Observed MW: 30 kDa	

Applications

Tested Applications: IF, FC (Intra)	Positive Controls: IF : HepG2 cells,
Species Specificity: human, mouse	

Background Information

BCL2L1 is a member of the BCL-2 protein family. BCL2L1 is expressed as three isoforms, Bcl-X(L), Bcl-X(s) and Bcl-X(beta), and is located at the outer mitochondrial membrane. The Bcl-XL isoform is a 233 amino acid protein, acting as an apoptotic inhibitor. Bcl-XL can form heterodimers with BAX, BAK or BCL2, and the heterodimerization with BAX does not seem to be required for anti-apoptotic activity. The Bcl-XS isoform is a shorter variant that is 178 amino acids in length and lacks a 63 amino acid region (amino acids 126-188), acting as an apoptotic activator. This antibody can recognize Bcl-XL, Bcl-XS and Bcl-X(Beta).

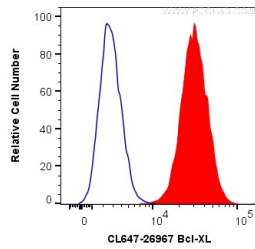
Storage

Storage:
Store at -20°C. Avoid exposure to light. Stable for one year after shipment.
Storage Buffer:
PBS with 50% Glycerol, 0.05% Proclin300, 0.5% BSA, pH 7.3.
Aliquoting is unnecessary for -20°C storage

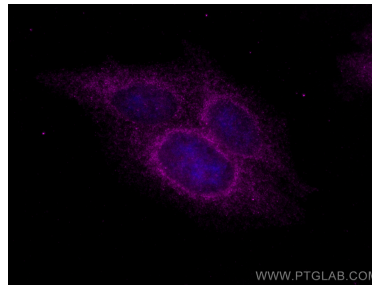
For technical support and original validation data for this product please contact:
T: 1 (888) 4PTGLAB (1-888-478-4522) (toll free in USA), or 1(312) 455-8498 (outside USA)
E: proteintech@ptglab.com
W: ptglab.com

This product is exclusively available under Proteintech Group brand and is not available to purchase from any other manufacturer.

Selected Validation Data



1×10^6 Jurkat cells were intracellularly stained with 0.2 ug CoraLite® Plus 647 Anti-Human Bcl-XL (CL647-26967) (red), or 0.2 ug CL647-30000 Rabbit IgG (blue). Cells were fixed with 4% PFA and permeabilized with Flow Cytometry Perm Buffer (PF00011-C).



Immunofluorescent analysis of (4% PFA) fixed HepG2 cells using CoraLite® Plus 647 Bcl-XL antibody (CL647-26967) at dilution of 1:200.