

For Research Use Only

# CoraLite® Plus 647-conjugated CITED1 Polyclonal antibody



Catalog Number: CL647-26999

## Basic Information

Catalog Number:

CL647-26999

Size:

100ul, Concentration: 1000 µg/ml by  
Nanodrop;

Source:

Rabbit

Isotype:

IgG

Immunogen Catalog Number:

AG24643

GenBank Accession Number:

BC004240

GeneID (NCBI):

4435

UNIPROT ID:

Q99966

Full Name:

Cbp/p300-interacting transactivator,  
with Glu/Asp-rich carboxy-terminal  
domain, 1

Calculated MW:

27 kDa

Observed MW:

30 kDa

Purification Method:

Antigen affinity purification

Excitation/Emission maxima  
wavelengths:

654 nm / 674 nm

## Applications

Tested Applications:

FC (Intra)

Species Specificity:

human, rat, mouse

## Background Information

CITED1, also named as MSG1, belongs to the CITED family. CITED1 is a bifunctional transcriptional cofactor which is able to activate or repress transcription in association with other transcription factors. CITED1 has 2 isoforms with the molecular mass of 20 and 23 kDa. The elevation of CITED1 may be directly associated with the preneoplastic phenotype (PMID: 23935526).

## Storage

Storage:

Store at -20°C. Avoid exposure to light. Stable for one year after shipment.

Storage Buffer:

PBS with 50% Glycerol, 0.05% Proclin300, 0.5% BSA, pH 7.3.

Aliquoting is unnecessary for -20°C storage

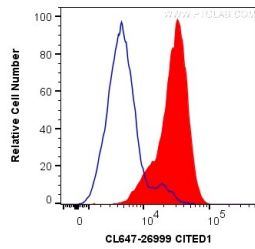
For technical support and original validation data for this product please contact:

T: 1 (888) 4PTGLAB (1-888-478-4522) (toll free  
in USA), or 1(312) 455-8498 (outside USA)

E: [proteintech@ptglab.com](mailto:proteintech@ptglab.com)  
W: [ptglab.com](http://ptglab.com)

This product is exclusively available under Proteintech Group brand and is not available to purchase from any other manufacturer.

## Selected Validation Data



1X10<sup>6</sup> HEK-293 cells were intracellularly stained with 0.2 ug CoraLite® Plus 647 Anti-Human CITED1 (CL647-26999) (red), or 0.2 ug isotype control (blue). Cells were fixed with 4% PFA and permeabilized with Flow Cytometry Perm Buffer (PF00011-C).