

For Research Use Only

# CoraLite® Plus 647-conjugated ki67 Polyclonal antibody



Catalog Number: CL647-28074

## Basic Information

<b>Catalog Number:</b> CL647-28074	<b>GenBank Accession Number:</b> NM_001081117	<b>Purification Method:</b> Antigen affinity purification
<b>Size:</b> 100ul , Concentration: 1000 µg/ml by Nanodrop;	<b>GeneID (NCBI):</b> 17345	<b>Recommended Dilutions:</b> IF 1:50-1:500
<b>Source:</b> Rabbit	<b>Full Name:</b> antigen identified by monoclonal antibody Ki 67	<b>Excitation/Emission maxima wavelengths:</b> 654 nm / 674 nm
<b>Isotype:</b> IgG	<b>Calculated MW:</b> 351 kDa	
<b>Immunogen Catalog Number:</b> AG27894		

## Applications

<b>Tested Applications:</b> IF	<b>Positive Controls:</b> IF : mouse colon tissue,
<b>Species Specificity:</b> mouse	

## Background Information

The Ki-67 protein (also known as MKI67) is a cellular marker for proliferation. Ki67 is present during all active phases of the cell cycle (G1, S, G2 and M), but is absent in resting cells (G0). Cellular content of Ki-67 protein markedly increases during cell progression through S phase of the cell cycle. Therefore, the nuclear expression of Ki67 can be evaluated to assess tumor proliferation by immunohistochemistry.

## Storage

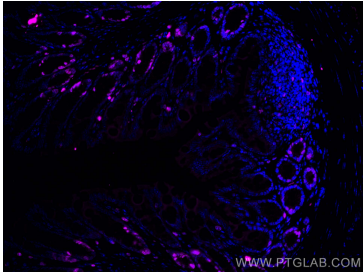
**Storage:**  
Store at -20°C. Avoid exposure to light. Stable for one year after shipment.  
**Storage Buffer:**  
PBS with 50% Glycerol, 0.05% Proclin300, 0.5% BSA, pH 7.3.  
Aliquoting is unnecessary for -20°C storage

\*\*\* 20ul sizes contain 0.1% BSA

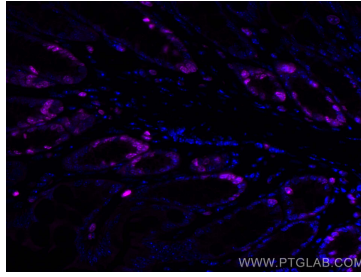
For technical support and original validation data for this product please contact:  
T: 1 (888) 4PTGLAB (1-888-478-4522) (toll free in USA), or 1(312) 455-8498 (outside USA)  
E: proteintech@ptglab.com  
W: ptglab.com

This product is exclusively available under Proteintech Group brand and is not available to purchase from any other manufacturer.

## Selected Validation Data



Immunofluorescent analysis of (4% PFA) fixed mouse colon tissue using CoraLite® Plus 647 ki67 antibody (CL647-28074) at dilution of 1:200.



Immunofluorescent analysis of (4% PFA) fixed mouse colon tissue using CoraLite® Plus 647 ki67 antibody (CL647-28074) at dilution of 1:200.