

For Research Use Only

CoraLite® Plus 647-conjugated ERK1/2 Polyclonal antibody



Catalog Number:CL647-51068

Basic Information

| | | |
|---|---|---|
| Catalog Number: CL647-51068 | GenBank Accession Number: BC017832 | Purification Method: Antigen affinity purification |
| Size: 100ul , Concentration: 1000 µg/ml by Nanodrop; | GeneID (NCBI): 5594 | Recommended Dilutions: IF 1:50-1:500 |
| Source: Rabbit | Full Name: mitogen-activated protein kinase 1 | Excitation/Emission maxima wavelengths: 654 nm / 674 nm |
| Isotype: IgG | Calculated MW: 360 aa, 41 kDa | |
| | Observed MW: 38-44 kDa | |

Applications

| | |
|--|---|
| Tested Applications: FC (Intra), IF | Positive Controls: IF : HeLa cells, |
| Species Specificity: human, mouse, rat | |

Background Information

ERK1 and ERK2 belongs to the protein kinase superfamily. It is involved in both the initiation and regulation of meiosis, mitosis, and postmitotic functions in differentiated cells by phosphorylating a number of transcription factors such as ELK-1. ERK1/2 catalized the reaction: ATP + a protein = ADP + a phosphoprotein. It is activated by tyrosine phosphorylation in response to INS and NGF. This antibody can recognize both ERK1 and ERK2 with the molecular mass of 38-44 kDa.

Storage

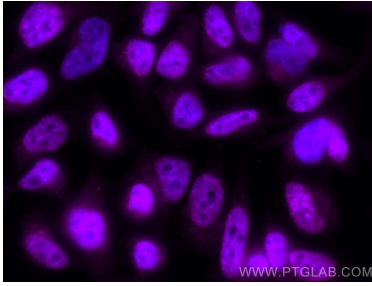
Storage:
Store at -20°C. Avoid exposure to light. Stable for one year after shipment.
Storage Buffer:
PBS with 50% Glycerol, 0.05% Proclin300, 0.5% BSA, pH 7.3.
Aliquoting is unnecessary for -20°C storage

*** 20ul sizes contain 0.1% BSA

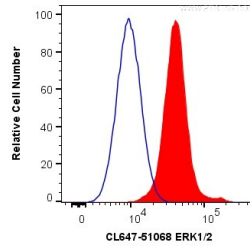
For technical support and original validation data for this product please contact:
T: 1 (888) 4PTGLAB (1-888-478-4522) (toll free in USA), or 1(312) 455-8498 (outside USA) E: proteintech@ptglab.com W: ptglab.com

This product is exclusively available under Proteintech Group brand and is not available to purchase from any other manufacturer.

Selected Validation Data



Immunofluorescent analysis of (4% PFA) fixed HeLa cells using CoraLite® Plus 647 ERK1/2 antibody (CL647-51068) at dilution of 1:100.



1X10⁶ HeLa cells were intracellularly stained with 0.2 ug CoraLite® Plus 647 Anti-Human ERK1/2 (CL647-51068) (red), or 0.2 ug Control Antibody (blue). Cells were fixed with 4% PFA and permeabilized with Flow Cytometry Perm Buffer (PF00011-C).