

For Research Use Only

CoraLite® Plus 647-conjugated BCL2 Monoclonal antibody



Catalog Number: CL647-60178

Featured Product

Basic Information

| | | |
|---|--|---|
| Catalog Number: CL647-60178 | GenBank Accession Number: BC027258 | Purification Method: Protein A purification |
| Size: 100ul , Concentration: 1000 µg/ml by Nanodrop; | GeneID (NCBI): 596 | CloneNo.: 4H8C6 |
| Source: Mouse | Full Name: B-cell CLL/Lymphoma 2 | Excitation/Emission maxima wavelengths: 654 nm / 674 nm |
| Isotype: IgG2b | Calculated MW: 26 kDa | |
| Immunogen Catalog Number: AG3508 | Observed MW: 26 kDa | |

Applications

Tested Applications:
FC

Species Specificity:
human, pig

Background Information

BCL2 belongs to the Bcl-2 family. It suppresses apoptosis in a variety of cell systems including factor-dependent lymphohematopoietic and neural cells. BCL2 regulates cell death by controlling the mitochondrial membrane permeability. It appears to function in a feedback loop system with caspases. BCL2 inhibits caspase activity either by preventing the release of cytochrome c from the mitochondria and/or by binding to the apoptosis-activating factor (APAF-1).

Storage

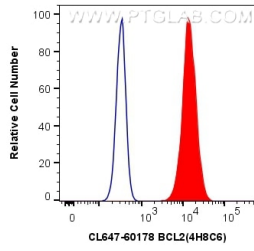
Storage:
Store at -20°C. Avoid exposure to light. Stable for one year after shipment.
Storage Buffer:
PBS with 50% Glycerol, 0.05% Proclin300, 0.5% BSA, pH 7.3.
Aliquoting is unnecessary for -20°C storage

*** 20ul sizes contain 0.1% BSA

For technical support and original validation data for this product please contact:
T: 1 (888) 4PTGLAB (1-888-478-4522) (toll free in USA), or 1(312) 455-8498 (outside USA)
E: proteintech@ptglab.com
W: ptglab.com

This product is exclusively available under Proteintech Group brand and is not available to purchase from any other manufacturer.

Selected Validation Data



1X10⁶ Jurkat cells were intracellularly stained with 0.4 ug CoraLite® Plus 647 Anti-Human BCL2 (CL647-60178, Clone:4H8C6) (red), or 0.4 ug Isotype Control. Cells were fixed with 4% PFA and permeabilized with Flow Cytometry Perm Buffer (PF00011-C).