

For Research Use Only

# CoraLite® Plus 647-conjugated CD3 Monoclonal antibody

Catalog Number: CL647-60181

Featured Product



## Basic Information

### Catalog Number:

CL647-60181

### Size:

100ul , Concentration: 1000 ug/ml by Nanodrop;

### Source:

Mouse

### Isotype:

IgG2b

### Immunogen Catalog Number:

AG11797

### GenBank Accession Number:

BC049847

### GeneID (NCBI):

916

### ENSEMBL Gene ID:

ENSG00000198851

### UNIPROT ID:

P07766

### Full Name:

CD3e molecule, epsilon (CD3-TCR complex)

### Calculated MW:

207 aa, 23 kDa

### Observed MW:

23 kDa

### Purification Method:

Protein A purification

### CloneNo.:

3F3A1

### Recommended Dilutions:

IF-P 1:50-1:500

IF/ICC 1:50-1:500

### Excitation/Emission maxima wavelengths:

654 nm / 674 nm

## Applications

### Tested Applications:

IF/ICC, IF-P

### Species Specificity:

human

### Positive Controls:

IF-P : human colon cancer tissue, human tonsillitis tissue, human liver cancer tissue

IF/ICC : Jurkat cells,

## Background Information

CD3 is a complex of proteins that directly associates with the T cell receptor (TCR). The TCR/CD3 complex of T-lymphocytes consists of either a TCR alpha/beta or TCR gamma/delta heterodimer coexpressed at the cell surface with the invariant subunits of CD3 labeled gamma, delta, epsilon, zeta, and eta. The TCR recognizes antigens bound to major histocompatibility complex (MHC) molecules. TCR-mediated peptide-MHC recognition is transmitted to the CD3 complex, leading to the intracellular signal transduction. CD3 is considered to be a pan-T cell marker for detection of normal and neoplastic T cells. This anti-CD3 is a monoclonal antibody directed against the epsilon chain of human CD3 molecule.

## Storage

### Storage:

Store at -20°C. Avoid exposure to light. Stable for one year after shipment.

### Storage Buffer:

PBS with 50% Glycerol, 0.05% Proclin300, 0.5% BSA, pH 7.3.

Aliquoting is unnecessary for -20°C storage

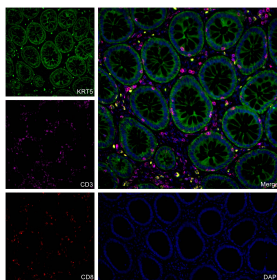
For technical support and original validation data for this product please contact:

T: 1 (888) 4PTGLAB (1-888-478-4522) (toll free in USA), or 1(312) 455-8498 (outside USA)

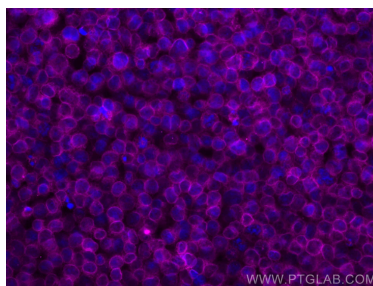
E: [proteintech@ptglab.com](mailto:proteintech@ptglab.com)  
W: [ptglab.com](http://ptglab.com)

This product is exclusively available under Proteintech Group brand and is not available to purchase from any other manufacturer.

## Selected Validation Data



Immunofluorescent analysis of (4% PFA) fixed human colon cancer tissue using CoraLite® Plus 647 CD3 antibody (CL647-60181, Clone: 3F3A1 ) at dilution of 1:200, CoraLite® 594 CD8 antibody (CL594-66868, Clone: 1G2B10, red), CoraLite® Plus 488 pan-keratin antibody (CL488-26411, green).



Immunofluorescent analysis of (4% PFA) fixed Jurkat cells using CoraLite® Plus 647 CD3 antibody (CL647-60181, Clone: 3F3A1 ) at dilution of 1:200.