

For Research Use Only

CoraLite® Plus 647-conjugated Cytokeratin 19 Monoclonal antibody

Catalog Number:CL647-60187

Featured Product



Basic Information

Catalog Number:

CL647-60187

Size:

100ul , Concentration: 1000 ug/ml by
Nanodrop;

Source:

Mouse

Isotype:

IgG2b

Immunogen Catalog Number:

AG7407

GenBank Accession Number:

BC002539

GeneID (NCBI):

3880

UNIPROT ID:

P08727

Full Name:

keratin 19

Calculated MW:

44 kDa

Observed MW:

48 kDa

Purification Method:

Protein A purification

CloneNo.:

3G1E4

Recommended Dilutions:

IF-P 1:50-1:500

Excitation/Emission maxima
wavelengths:

654 nm / 674 nm

Applications

Tested Applications:

IF-P, FC (Intra)

Species Specificity:

human

Positive Controls:

IF-P : human breast cancer tissue, human oesophagus
cancer tissue

Background Information

The keratins are intermediate filament proteins responsible for the structural integrity of epithelial cells. KRT19, one of type I keratins, is specifically expressed in the periderm, the transiently superficial layer that envelopes the developing epidermis. Due to its high sensitivity, KRT19 is the most used marker for detection of tumor cells disseminated in lymph nodes, peripheral blood, and bone marrow of breast cancer patients.

Storage

Storage:

Store at -20°C. Avoid exposure to light. Stable for one year after shipment.

Storage Buffer:

PBS with 50% Glycerol, 0.05% Proclin300, 0.5% BSA, pH 7.3.

Aliquoting is unnecessary for -20°C storage

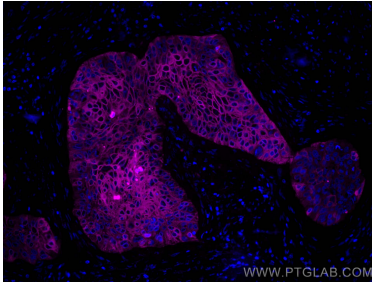
For technical support and original validation data for this product please contact:

T: 1 (888) 4PTGLAB (1-888-478-4522) (toll free
in USA), or 1(312) 455-8498 (outside USA)

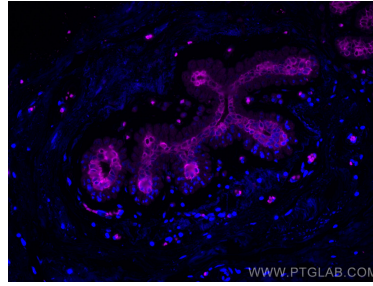
E: proteintech@ptglab.com
W: ptglab.com

This product is exclusively available under Proteintech
Group brand and is not available to purchase from any
other manufacturer.

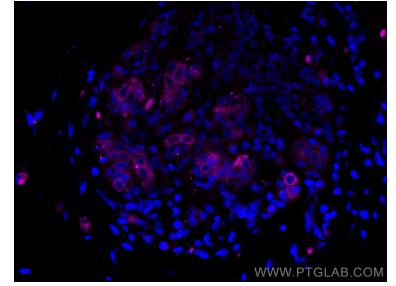
Selected Validation Data



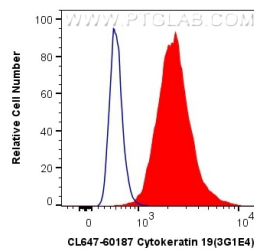
Immunofluorescent analysis of (4% PFA) fixed human oesophagus cancer tissue using CoraLite® Plus 647 Cytokeratin 19 antibody (CL647-60187, Clone: 3G1E4) at dilution of 1:200.



Immunofluorescent analysis of (4% PFA) fixed human breast cancer tissue using CoraLite® Plus 647 Cytokeratin 19 antibody (CL647-60187, Clone: 3G1E4) at dilution of 1:200.



Immunofluorescent analysis of (4% PFA) fixed human breast cancer tissue using CoraLite® Plus 647 Cytokeratin 19 antibody (CL647-60187, Clone: 3G1E4) at dilution of 1:200.



1X10⁶ HeLa cells were intracellularly stained with 0.8 ug CoraLite® Plus 647 Anti-Human Cytokeratin 19 (CL647-60187, Clone:3G1E4) (red), or 0.8 ug Mouse IgG2b Isotype Control (MPC-11) (65128-1-Ig, Clone: MPC-11) (blue). Cells were fixed with 4% PFA and permeabilized with Flow Cytometry Perm Buffer (PF00011-C).