

For Research Use Only

# CoraLite® Plus 647-conjugated CD20 Monoclonal antibody



Catalog Number: **CL647-60271**

## Basic Information

<b>Catalog Number:</b> CL647-60271	<b>GenBank Accession Number:</b> BC002807	<b>Purification Method:</b> Protein A purification
<b>Size:</b> 100ul , Concentration: 1000 µg/ml by Nanodrop;	<b>GeneID (NCBI):</b> 931	<b>CloneNo.:</b> 4A7G3
<b>Source:</b> Mouse	<b>Full Name:</b> membrane-spanning 4-domains, subfamily A, member 1	<b>Recommended Dilutions:</b> IF 1:50-1:500
<b>Isotype:</b> IgG2b	<b>Calculated MW:</b> 297 aa, 33 kDa	<b>Excitation/Emission maxima wavelengths:</b> 654 nm / 674 nm
<b>Immunogen Catalog Number:</b> AG17309		

## Applications

<b>Tested Applications:</b> FC (Intra), IF	<b>Positive Controls:</b> IF : human tonsillitis tissue, human lung cancer tissue
<b>Species Specificity:</b> human	

## Background Information

CD20 is a 33-37 kDa transmembrane phosphoprotein. CD20 is a B-lymphocyte surface molecule that is widely expressed during B-cell ontogeny, from early pre-B-cell developmental stages until final differentiation into plasma cells. CD20 functions as calcium-permeable cation channel. It is involved in the regulation of B-cell activation and proliferation. CD20 serves as a useful target for antibody-mediated therapeutic depletion of B-cells.

## Storage

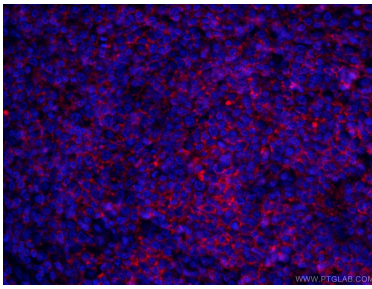
**Storage:**  
Store at -20°C. Avoid exposure to light. Stable for one year after shipment.  
**Storage Buffer:**  
PBS with 50% Glycerol, 0.05% Proclin300, 0.5% BSA, pH 7.3.  
Aliquoting is unnecessary for -20°C storage

\*\*\* 20ul sizes contain 0.1% BSA

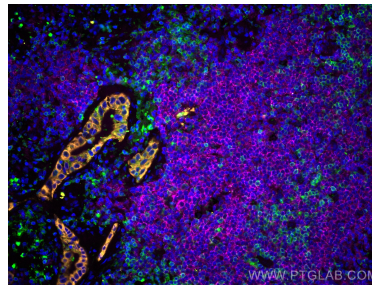
For technical support and original validation data for this product please contact:  
T: 1 (888) 4PTGLAB (1-888-478-4522) (toll free in USA), or 1(312) 455-8498 (outside USA)  
E: [proteintech@ptglab.com](mailto:proteintech@ptglab.com)  
W: [ptglab.com](http://ptglab.com)

This product is exclusively available under Proteintech Group brand and is not available to purchase from any other manufacturer.

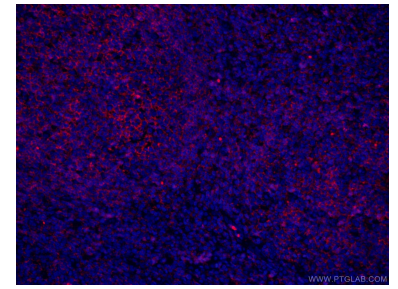
## Selected Validation Data



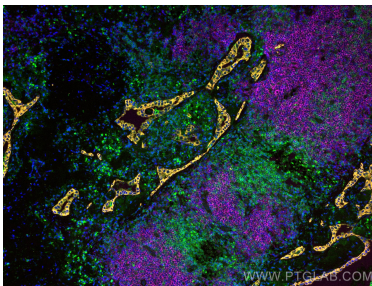
Immunofluorescent analysis of (4% PFA) fixed human tonsillitis tissue using CL647-60271 (CD20 antibody) at dilution of 1:100 and CoraLite488-Conjugated AffiniPure Goat Anti-Mouse IgG(H+L).



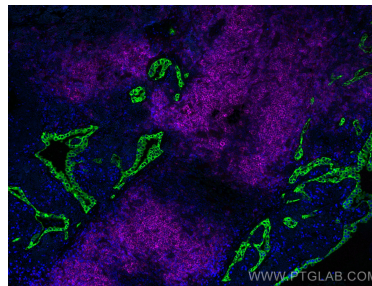
Immunofluorescent analysis of (4% PFA) fixed human lung cancer tissue using CoraLite® Plus 647 CD20 antibody (CL647-60271, Clone: 4A7G3 ) at dilution of 1:100, CoraLite®488 CD3 antibody (CL488-60181, Clone: 3F3A1, green), CoraLite®555 pan-keratin antibody (CL555-26411, orange).



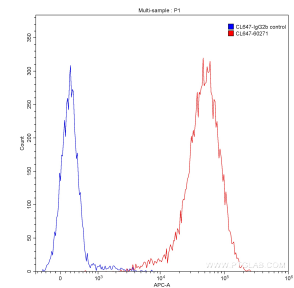
Immunofluorescent analysis of (4% PFA) fixed human tonsillitis tissue using CL647-60271 (CD20 antibody) at dilution of 1:100 and CoraLite488-Conjugated AffiniPure Goat Anti-Mouse IgG(H+L).



Immunofluorescent analysis of (4% PFA) fixed human lung cancer tissue using CoraLite® Plus 647 CD20 antibody (CL647-60271, Clone: 4A7G3 ) at dilution of 1:100, CoraLite®488 CD3 antibody (CL488-60181, Clone: 3F3A1, green), CoraLite®555 pan-keratin antibody (CL555-26411, orange).



Immunofluorescent analysis of (4% PFA) fixed human lung cancer tissue using CoraLite® Plus 647 CD20 antibody (CL647-60271, Clone: 4A7G3 ) at dilution of 1:100, CoraLite®488 pan-keratin antibody (CL488-26411, green).



1X10<sup>6</sup> Raji cells were stained with 0.20 ug CoraLite® Plus 647-conjugated Anti-Human CD20 (CL647-60271, Clone:4A7G3) (red) or 0.20 ug control antibody (blue). Fixed with 90% MeOH.