

For Research Use Only

# CoraLite® Plus 647 Anti-Mouse CD38 (90)



Catalog Number:CL647-65059

## Basic Information

<b>Catalog Number:</b> CL647-65059	<b>GenBank Accession Number:</b> BC046312	<b>Purification Method:</b> Affinity purification
<b>Size:</b> 100tests , 5 µl/test	<b>GeneID (NCBI):</b> 12494	<b>CloneNo.:</b> 90
<b>Source:</b> Rat	<b>Full Name:</b> CD38 antigen	<b>Recommended Dilutions:</b> IF 1:200-1:800
<b>Isotype:</b> IgG2a, kappa		<b>Excitation/Emission maxima wavelengths:</b> 650 nm / 665 nm

## Applications

<b>Tested Applications:</b> FC, IF	<b>Positive Controls:</b> IF : mouse splenocytes,
<b>Species Specificity:</b> Mouse	

## Background Information

CD38, also known as ADP-ribosyl cyclase 1, is a type II transmembrane glycoprotein with a short N-terminal cytoplasmic tail, a single membrane-spanning domain, and a C-terminal extracellular region with four N-glycosylation sites (PMID: 2319135). The extracellular domain of CD38 has bifunctional enzyme activities that catalyze synthesis of cyclic ADP ribose from nicotinamide adenine dinucleotide (NAD) and hydrolysis of cyclic ADP ribose to adenosine diphosphoribose (PMID: 10636863). CD38 is expressed on a variety of hematopoietic and non-hematopoietic cells and is involved in diverse processes such as generation of calcium-mobilizing metabolites, cell activation, and chemotaxis (PMID: 25938500).

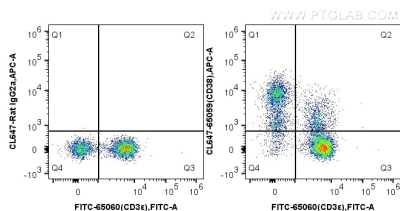
## Storage

**Storage:**  
Store at 2-8°C. Avoid exposure to light. Stable for one year after shipment.  
**Storage Buffer:**  
PBS with 0.1% sodium azide and 0.5% BSA, pH 7.3.

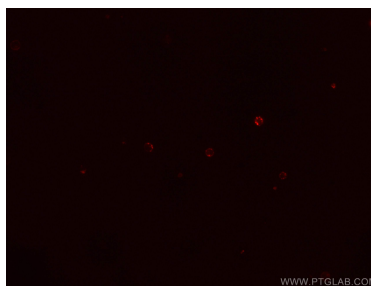
For technical support and original validation data for this product please contact:  
T: 1 (888) 4PTGLAB (1-888-478-4522) (toll free in USA), or 1(312) 455-8498 (outside USA)  
E: [proteintech@ptglab.com](mailto:proteintech@ptglab.com)  
W: [ptglab.com](http://ptglab.com)

This product is exclusively available under Proteintech Group brand and is not available to purchase from any other manufacturer.

## Selected Validation Data



1X10<sup>6</sup> mouse splenocytes were surface stained with FITC Anti-Mouse CD3ε (FITC-65060, Clone: 145-2C11) and CoraLite® Plus 647-conjugated Rat IgG2a isotype control (left) or 5.00 ul CoraLite® Plus 647-conjugated Anti-Mouse CD38 (CL647-65059, Clone: 90) (right). Cells were not fixed.



Immunofluorescent analysis of mouse splenocytes using CoraLite® Plus 647-conjugated Anti-Mouse CD38 (CL647-65059, Clone: 90) at dilution of 1:400.