

For Research Use Only

# CoraLite® Plus 647 Anti-Mouse CD45.2 (104)



Catalog Number: **CL647-65072**

## Basic Information

Catalog Number:

CL647-65072

Size:

100ug , 500 µg/ml

Source:

Mouse

Isotype:

IgG2a, kappa

GenBank Accession Number:

BC028512

GeneID (NCBI):

19264

UNIPROT ID:

P06800

Full Name:

protein tyrosine phosphatase,  
receptor type, C

Purification Method:

Affinity purification

CloneNo.:

104

Excitation/Emission maxima  
wavelengths:

654 nm / 674 nm

## Applications

Tested Applications:

FC

Species Specificity:

Mouse

## Background Information

CD45, also known as protein tyrosine phosphatase, receptor type C, is a type I transmembrane protein expressed on the surface of all haematopoietic cells with the exception of erythrocytes and platelets (PMID: 3489673; 28615666). CD45 is a pan-haematopoietic cell marker and has been shown to be essential for T- and B-cell activation and signalling (PMID: 9429890; 16378097). Allelic variants of mouse CD45, CD45.1 (Ly5.1) and CD45.2 (Ly5.1), have been established as a marker system to track haematopoietic cells following congenic mouse bone marrow transplants (PMID: 28615666). CD45.2 is the common form and is expressed by most of the established strains, while CD45.1 is found in only a few like the SJL mouse strain (PMID: 3489673).

## Storage

Storage:

Store at 2-8°C. Avoid exposure to light. Stable for one year after shipment.

Storage Buffer:

PBS with 0.1% sodium azide and 0.5% BSA, pH 7.3.

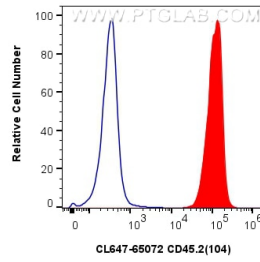
For technical support and original validation data for this product please contact:

T: 1 (888) 4PTGLAB (1-888-478-4522) (toll free  
in USA), or 1(312) 455-8498 (outside USA)

E: [proteintech@ptglab.com](mailto:proteintech@ptglab.com)  
W: [ptglab.com](http://ptglab.com)

This product is exclusively available under Proteintech Group brand and is not available to purchase from any other manufacturer.

## Selected Validation Data



$1 \times 10^6$  C57BL/6 mouse splenocytes were surface stained with 0.5  $\mu$ g CoraLite® Plus 647 Anti-Mouse CD45.2 (CL647-65072, Clone:104) (red), or 0.5  $\mu$ g CoraLite® Plus 647 Mouse IgG2a Isotype Control (C1.18.4) (CL647-65208, Clone: C1.18.4) (blue). Cells were not fixed.