

For Research Use Only

CoraLite® Plus 647 Anti-Human CD45 (2D1)

Catalog Number: CL647-65082

1 Publications



Basic Information

Catalog Number:

CL647-65082

Size:

100 tests, 5 µl/test

Source:

Mouse

Isotype:

IgG1, kappa

GenBank Accession Number:

BC014239

GeneID (NCBI):

5788

ENSEMBL Gene ID:

ENSG00000081237

Full Name:

protein tyrosine phosphatase, receptor type, C

Purification Method:

Affinity purification

CloneNo.:

2D1

Excitation/Emission maxima wavelengths:

654 nm / 674 nm

Applications

Tested Applications:

FC

Cited Applications:

IF

Species Specificity:

human

Cited Species:

human

Background Information

CD45, also known as protein tyrosine phosphatase, receptor type C, is a type I transmembrane protein expressed on the surface of all haematopoietic cells with the exception of erythrocytes and platelets (PMID: 3489673; 28615666). CD45 is a pan-haematopoietic cell marker and has been shown to be essential for T- and B-cell activation and signalling (PMID: 9429890; 16378097).

Notable Publications

Author	Pubmed ID	Journal	Application
Jianping Jiang	38827467	Exp Ther Med	IF

Storage

Storage:

Store at 2-8°C. Avoid exposure to light. Stable for one year after shipment.

Storage Buffer:

PBS with 0.1% sodium azide and 0.5% BSA, pH 7.3.

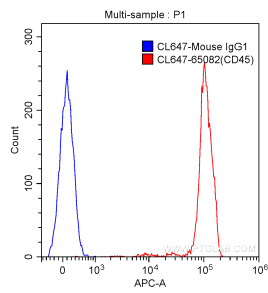
For technical support and original validation data for this product please contact:

T: 1 (888) 4PTGLAB (1-888-478-4522) (toll free in USA), or 1(312) 455-8498 (outside USA)

E: proteintech@ptglab.com
W: ptglab.com

This product is exclusively available under Proteintech Group brand and is not available to purchase from any other manufacturer.

Selected Validation Data



1X10⁶ human peripheral blood lymphocytes were surface stained with 5.00 ul/test CoraLite® Plus 647-conjugated Anti-Human CD45 (CL647-65082, Clone: 2D1) (red) or isotype control antibody (blue). Cells were not fixed.