

For Research Use Only

# CoraLite® Plus 647 Anti-Mouse KLRG1 (2F1)



Catalog Number: CL647-65084

## Basic Information

<b>Catalog Number:</b> CL647-65084	<b>GenBank Accession Number:</b> BC101953	<b>Purification Method:</b> Affinity purification
<b>Size:</b> 100tests , 5 µl/test	<b>GeneID (NCBI):</b> 50928	<b>CloneNo.:</b> 2F1
<b>Source:</b> Golden Syrian Hamster	<b>Full Name:</b> killer cell lectin-like receptor subfamily G, member 1	<b>Excitation/Emission maxima wavelengths:</b> 650 nm / 665 nm
<b>Isotype:</b> IgG		

## Applications

**Tested Applications:**  
FC

**Species Specificity:**  
Mouse

## Background Information

KLRG1 (killer cell lectin-like receptor subfamily G, member 1) is a C-type lectin inhibitory receptor that contains an immunoreceptor tyrosine-based inhibitory motif (ITIM) in its cytoplasmic domain. KLRG1 is expressed by subsets of NK and T cells, existing both as a monomer and as a disulfide-linked homodimer (PMID: 10741410; 19604491). It is considered to be a cell differentiation marker for NK and T cells and is strongly induced by viral and other infections (PMID: 20373518). Through interactions with members of the cadherin family, KLRG1 plays an inhibitory role on NK- and T-cell function (PMID: 19009530; 20373518).

## Storage

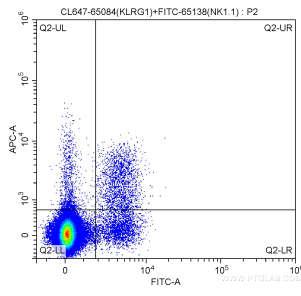
**Storage:**  
Store at 2-8°C. Avoid exposure to light.

**Storage Buffer:**  
PBS with 0.1% sodium azide and 0.5% BSA, pH 7.3.

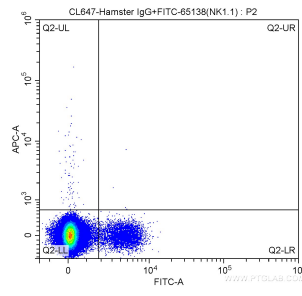
For technical support and original validation data for this product please contact:  
T: 1 (888) 4PTGLAB (1-888-478-4522) (toll free in USA), or 1(312) 455-8498 (outside USA) E: proteintech@ptglab.com W: ptglab.com

This product is exclusively available under Proteintech Group brand and is not available to purchase from any other manufacturer.

## Selected Validation Data



1X10<sup>6</sup> mouse splenocytes were surface stained with FITC Anti-Mouse NK1.1 (CD161) (FITC-65138, Clone: PK136) and 5 ul CoraLite® Plus 647 Anti-Mouse KLRG1 (CL647-65084, Clone: 2F1). Cells were not fixed.



1X10<sup>6</sup> mouse splenocytes were surface stained with FITC Anti-Mouse NK1.1 (CD161) (FITC-65138, Clone: PK136) and CoraLite® Plus 647 conjugated Hamster IgG isotype control. Cells were not fixed.