

For Research Use Only

# CoraLite® Plus 647 Anti-Mouse CD45.1 (A20)



Catalog Number: **CL647-65092**

## Basic Information

<b>Catalog Number:</b> CL647-65092	<b>GenBank Accession Number:</b> BC028512	<b>Purification Method:</b> Affinity purification
<b>Size:</b> 100ug, 0.5 mg/ml	<b>GeneID (NCBI):</b> 19264	<b>CloneNo.:</b> A20
<b>Source:</b> Mouse	<b>Full Name:</b> protein tyrosine phosphatase, receptor type, C	<b>Excitation/Emission maxima wavelengths:</b> 654 nm / 674 nm
<b>Isotype:</b> IgG2a, kappa		

## Applications

**Tested Applications:**  
FC

**Species Specificity:**  
Mouse

## Background Information

CD45, also known as protein tyrosine phosphatase, receptor type C, is a type I transmembrane protein expressed on the surface of all haematopoietic cells with the exception of erythrocytes and platelets (PMID: 3489673; 28615666). CD45 is a pan-haematopoietic cell marker and has been shown to be essential for T- and B-cell activation and signalling (PMID: 9429890; 16378097). Allelic variants of mouse CD45, CD45.1 (Ly5.1) and CD45.2 (Ly5.1), have been established as a marker system to track haematopoietic cells following congenic mouse bone marrow transplants (PMID: 28615666). CD45.2 is the common form and is expressed by most of the established strains, while CD45.1 is found in only a few like the SJL mouse strain (PMID: 3489673).

## Storage

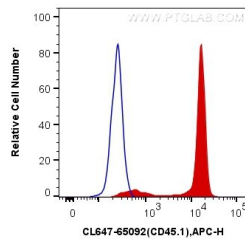
**Storage:**  
Store at 2-8°C. Avoid exposure to light. Stable for one year after shipment.

**Storage Buffer:**  
PBS with 0.1% sodium azide and 0.5% BSA, pH 7.3.

For technical support and original validation data for this product please contact:  
T: 1 (888) 4PTGLAB (1-888-478-4522) (toll free in USA), or 1(312) 455-8498 (outside USA)  
E: [proteintech@ptglab.com](mailto:proteintech@ptglab.com)  
W: [ptglab.com](http://ptglab.com)

This product is exclusively available under Proteintech Group brand and is not available to purchase from any other manufacturer.

## Selected Validation Data



1X10<sup>6</sup> SJL mouse splenocytes were surface stained with 0.125 ug CoraLite® Plus 647 Anti-Mouse CD45.1 (CL647-65092, Clone: A20) (red) or 0.125 ug Control Antibody. Cells were not fixed.