

For Research Use Only

# CoraLite® Plus 647 Anti-Human CD40 (G28.5)



Catalog Number: **CL647-65103**

## Basic Information

<b>Catalog Number:</b> CL647-65103	<b>GenBank Accession Number:</b> BC012419	<b>Purification Method:</b> Affinity purification
<b>Size:</b> 100tests , 5 µl/test	<b>GeneID (NCBI):</b> 958	<b>CloneNo.:</b> G28.5
<b>Source:</b> Mouse	<b>Full Name:</b> CD40 molecule, TNF receptor superfamily member 5	<b>Excitation/Emission maxima wavelengths:</b> 654 nm / 674 nm
<b>Isotype:</b> IgG1, kappa	<b>Calculated MW:</b> 277 aa, 31 kDa	

## Applications

**Tested Applications:**  
FC

**Species Specificity:**  
Human

## Background Information

CD40, also named as TNFRSF5 and Bp50, is a type I transmembrane protein that belongs to the tumor necrosis factor-R (TNF-R) family (PMID: 10647992). CD40 is expressed on B cells, dendritic cells (DCs), monocytes, platelets, and macrophages as well as by non-hematopoietic cells such as myofibroblasts, fibroblasts, epithelial, and endothelial cells (PMID: 19426221). It is a receptor for TNFSF5/CD40LG. CD40L/CD40 interactions are essential for immunoglobulin (Ig) isotype switching, germinal center formation and the development of B cell memory (PMID: 7516405; 11675497).

## Storage

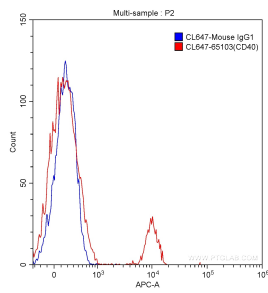
**Storage:**  
Store at 2-8°C. Avoid exposure to light. Stable for one year after shipment.

**Storage Buffer:**  
PBS with 0.1% sodium azide and 0.5% BSA, pH 7.3.

For technical support and original validation data for this product please contact:  
T: 1 (888) 4PTGLAB (1-888-478-4522) (toll free in USA), or 1(312) 455-8498 (outside USA)  
E: [proteintech@ptglab.com](mailto:proteintech@ptglab.com)  
W: [ptglab.com](http://ptglab.com)

This product is exclusively available under Proteintech Group brand and is not available to purchase from any other manufacturer.

## Selected Validation Data



1X10<sup>6</sup> human peripheral blood lymphocytes were surface stained with 5.00 ul/test CoraLite® Plus 647-conjugated Anti-Human CD40 (CL647-65103, Clone: G28.5) (red) or isotype control antibody (blue). Cells were not fixed.