

For Research Use Only

# CoraLite® Plus 647 Anti-Human CD11b (ICRF44)



Catalog Number: CL647-65116

## Basic Information

|                                       |  |  |
|---------------------------------------|--|--|
| <b>Catalog Number:</b><br>CL647-65116 | <b>GenBank Accession Number:</b><br>BC096346                                       | <b>Purification Method:</b><br>Affinity purification |
| <b>Size:</b><br>100tests , 5 µl/test  | <b>GeneID (NCBI):</b><br>3684  | <b>CloneNo.:</b><br>ICRF44                           |
| <b>Source:</b><br>Mouse               | <b>Full Name:</b><br>integrin, alpha M (complement component 3 receptor 3 subunit) |  |
| <b>Isotype:</b><br>IgG1, kappa        | <b>Calculated MW:</b><br>1152 aa, 127 kDa  |  |

## Applications

**Tested Applications:**  
FC

**Species Specificity:**  
Human

## Background Information

Integrins are cell adhesion receptors that are heterodimers composed of non-covalently associated  $\alpha$  and  $\beta$  subunits (PMID: 9779984). CD11b, also known as Integrin alpha M or CR3A, belongs to the integrin alpha chain family. CD11b forms an  $\alpha/\beta$  heterodimer with CD18 (integrin  $\beta$ 2). CD11b/CD18 is implicated in various adhesive interactions of monocytes, macrophages and granulocytes as well as in mediating the uptake of complement-coated particles and pathogens (PMID: 9558116; 20008295). CD11b/CD18 is a receptor for the complement protein fragment iC3b, and is also a receptor for fibrinogen, factor X and ICAM1 (PMID: 2971974; 15485828).

## Storage

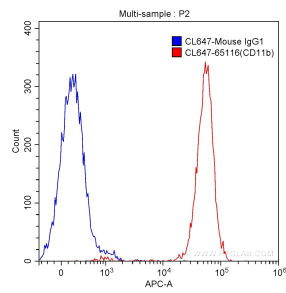
**Storage:**  
Store at 2-8°C. Avoid exposure to light. Stable for one year after shipment.

**Storage Buffer:**  
PBS with 0.1% sodium azide and 0.5% BSA, pH 7.3.

For technical support and original validation data for this product please contact:  
T: 1 (888) 4PTGLAB (1-888-478-4522) (toll free in USA), or 1(312) 455-8498 (outside USA)  
E: [proteintech@ptglab.com](mailto:proteintech@ptglab.com)  
W: [ptglab.com](http://ptglab.com)

This product is exclusively available under Proteintech Group brand and is not available to purchase from any other manufacturer.

## Selected Validation Data



1X10<sup>6</sup> human peripheral blood granulocytes were surface stained with 5.00 ul CoraLite® Plus 647-conjugated Anti-Human CD11b (CL647-65116, Clone:CRF44) (red) or isotype control antibody (blue). Cells were not fixed.