

# CoraLite® Plus 647 Anti-Human PD-1/CD279 (J110)

Catalog Number: **CL647-65119**

## Basic Information

<b>Catalog Number:</b> CL647-65119	<b>GenBank Accession Number:</b> BC074740	<b>Purification Method:</b> Affinity purification
<b>Size:</b> 100tests , 5 µl/test	<b>GeneID (NCBI):</b> 5133	<b>CloneNo.:</b> J110
<b>Source:</b> Mouse	<b>Full Name:</b> programmed cell death 1	<b>Excitation/Emission maxima wavelengths:</b> 654 nm / 674 nm
<b>Isotype:</b> IgG1	<b>Calculated MW:</b> 288 aa, 32 kDa	

## Applications

**Tested Applications:**  
FC

**Species Specificity:**  
Human

## Background Information

Programmed cell death 1 (PD-1, also known as CD279) is an immunoinhibitory receptor that belongs to the CD28/CTLA-4 subfamily of the Ig superfamily. It is a 288 amino acid (aa) type I transmembrane protein composed of one Ig superfamily domain, a stalk, a transmembrane domain, and an intracellular domain containing an immunoreceptor tyrosine-based inhibitory motif (ITIM) as well as an immunoreceptor tyrosine-based switch motif (ITSM) (PMID: 18173375). PD-1 is expressed during thymic development and is induced in a variety of hematopoietic cells in the periphery by antigen receptor signaling and cytokines (PMID: 20636820). Engagement of PD-1 by its ligands PD-L1 or PD-L2 transduces a signal that inhibits T-cell proliferation, cytokine production, and cytolytic function (PMID: 19426218). It is critical for the regulation of T cell function during immunity and tolerance. Blockade of PD-1 can overcome immune resistance and also has been shown to have antitumor activity (PMID: 22658127; 23169436).

## Storage

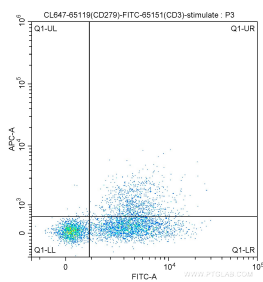
**Storage:**  
Store at 2-8°C. Avoid exposure to light. Stable for one year after shipment.

**Storage Buffer:**  
PBS with 0.1% sodium azide and 0.5% BSA, pH 7.3.

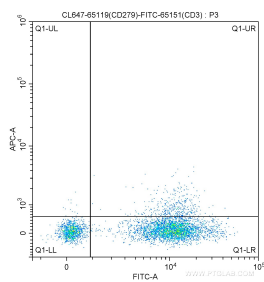
For technical support and original validation data for this product please contact:  
T: 1 (888) 4PTGLAB (1-888-478-4522) (toll free in USA), or 1(312) 455-8498 (outside USA)  
E: [proteintech@ptglab.com](mailto:proteintech@ptglab.com)  
W: [ptglab.com](http://ptglab.com)

This product is exclusively available under Proteintech Group brand and is not available to purchase from any other manufacturer.

## Selected Validation Data



1X10<sup>6</sup> PHA-stimulated (5 µg/mL, overnight) human peripheral blood lymphocytes were surface stained with 5.00 µl CoraLite® Plus 647-conjugated Anti-Human PD-1/CD279 (CL647-65119, Clone: J110) and FITC Anti-Human CD3 (FITC-65151, Clone: UCHT1). Cells were not fixed.



1X10<sup>6</sup> human peripheral blood lymphocytes were surface stained with 5.00 µl CoraLite® Plus 647-conjugated Anti-Human PD-1/CD279 (CL647-65119, Clone: J110) and FITC Anti-Human CD3 (FITC-65151, Clone: UCHT1). Cells were not fixed.