

For Research Use Only

# CoraLite® Plus 647 Anti-Mouse CD25 (PC61.5)



Catalog Number: **CL647-65137**

## Basic Information

<b>Catalog Number:</b> CL647-65137	<b>GenBank Accession Number:</b> BC114437	<b>Purification Method:</b> Affinity purification
<b>Size:</b> 100ug, 0.5 mg/ml	<b>GeneID (NCBI):</b> 16184	<b>CloneNo.:</b> PC61.5
<b>Source:</b> Rat	<b>Full Name:</b> interleukin 2 receptor, alpha chain	
<b>Isotype:</b> IgG1, lambda		

## Applications

**Tested Applications:**  
FC

**Species Specificity:**  
Mouse

## Background Information

Proliferation of T lymphocytes is triggered by the interaction of IL-2 with its specific receptor following T lymphocyte activation. The receptor for IL-2 has three forms, generated by different combinations of three different proteins, the alpha chain (IL-2R alpha), the beta chain (IL-2R beta), and the gamma chain (IL-2R gamma) (PMID: 8476561). IL-2R alpha (also known as CD25) is a type I transmembrane protein present on activated T cells, activated B cells, some thymocytes, myeloid precursors, and oligodendrocytes. CD25 is also found on natural CD4<sup>+</sup>Foxp3<sup>+</sup> Treg cells (PMID: 22585674).

## Storage

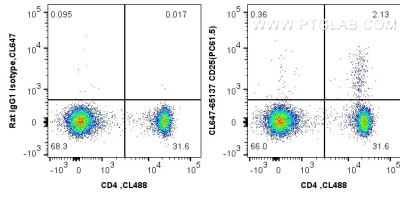
**Storage:**  
Store at 2-8°C. Avoid exposure to light. Stable for one year after shipment.

**Storage Buffer:**  
PBS with 0.1% sodium azide and 0.5% BSA, pH 7.3.

For technical support and original validation data for this product please contact:  
T: 1 (888) 4PTGLAB (1-888-478-4522) (toll free in USA), or 1(312) 455-8498 (outside USA)      E: proteintech@ptglab.com  
W: ptglab.com

**This product is exclusively available under Proteintech Group brand and is not available to purchase from any other manufacturer.**

## Selected Validation Data



1X10<sup>6</sup> mouse splenocytes were surface stained with CoraLite® 488 Anti-Mouse CD4 (CL488-65104, Clone: GK1.5) and 0.5 µg CoraLite® Plus 647 Anti-Mouse CD25 (CL647-65137, Clone: PC61.5) or CoraLite® Plus 647-Conjugated rat IgG2a isotype control. Cells were not fixed.