

For Research Use Only

# CoraLite® Plus 647 Anti-Mouse NK1.1 (CD161) (PK136)



Catalog Number: **CL647-65138**

## Basic Information

<b>Catalog Number:</b> CL647-65138	<b>GenBank Accession Number:</b> BC120707	<b>Purification Method:</b> Affinity purification
<b>Size:</b> 100ug, 0.5 mg/ml	<b>GeneID (NCBI):</b> 17057	<b>CloneNo.:</b> PK136
<b>Source:</b> Mouse	<b>Full Name:</b> killer cell lectin-like receptor subfamily B member 1A	<b>Excitation/Emission maxima wavelengths:</b> 654 nm / 674 nm
<b>Isotype:</b> IgG2a, kappa		

## Applications

**Tested Applications:**  
FC

**Species Specificity:**  
Mouse

## Background Information

NK1.1 (CD161), also known as KLRB1 or NKR-P1A, is a type II transmembrane C-type lectin-like receptor and is expressed on the cell membrane as disulfide-linked homodimer (PMID: 8077657). It is expressed by the majority of NK cells and subsets of peripheral T cells, including both CD4+ and CD8+ T cells, and is expressed preferentially on adult T cells with a "memory" antigenic phenotype (PMID: 8077657; 22566826). Expression of CD161 correlates with the cytotoxic function of CD16+ NK cells, and ligation of CD161 with its ligand LLT1 inhibits NK cell cytotoxicity and cytokine secretion (PMID: 29686665).

## Storage

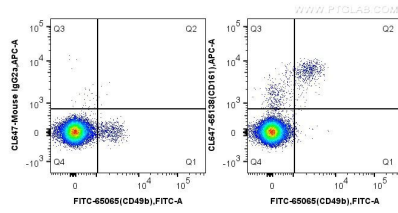
**Storage:**  
Store at 2-8°C. Avoid exposure to light. Stable for one year after shipment.

**Storage Buffer:**  
PBS with 0.1% sodium azide and 0.5% BSA, pH 7.3.

For technical support and original validation data for this product please contact:  
T: 1 (888) 4PTGLAB (1-888-478-4522) (toll free in USA), or 1(312) 455-8498 (outside USA)      E: [proteintech@ptglab.com](mailto:proteintech@ptglab.com)  
W: [ptglab.com](http://ptglab.com)

**This product is exclusively available under Proteintech Group brand and is not available to purchase from any other manufacturer.**

## Selected Validation Data



1X10<sup>6</sup> C57BL/6 mouse splenocytes were surface co-stained with FITC Anti-Mouse CD49b (DX5) and 0.25 ug CoraLite® Plus 647-conjugated Anti-Mouse NK1.1 (CD161) (CL647-65138, Clone: PK136) or 0.25 ug CoraLite® Plus 647-conjugated Mouse IgG2a isotype control. Cells were not fixed.