

For Research Use Only

# CoraLite® Plus 647 Anti-Mouse CD45R (B220) (RA3-6B2)

Catalog Number: CL647-65139



## Basic Information

### Catalog Number:

CL647-65139

### Size:

100ug, 0.5 mg/ml

### Source:

Rat

### Isotype:

IgG2a, kappa

### GenBank Accession Number:

BC028512

### GeneID (NCBI):

19264

### UNIPROT ID:

P06800

### Full Name:

protein tyrosine phosphatase, receptor type, C

### Purification Method:

Affinity purification

### CloneNo.:

RA3-6B2

### Recommended Dilutions:

IF/ICC 1:200-1:800

### Excitation/Emission maxima wavelengths:

654 nm / 674 nm

## Applications

### Tested Applications:

IF/ICC, FC

### Species Specificity:

mouse

### Positive Controls:

IF/ICC : mouse splenocytes,

## Background Information

CD45, also known as protein tyrosine phosphatase, receptor type C, is a type I transmembrane protein expressed on the surface of all haematopoietic cells with the exception of erythrocytes and platelets (PMID: 3489673; 28615666). CD45 is a pan-haematopoietic cell marker and has been shown to be essential for T- and B-cell activation and signalling (PMID: 9429890; 16378097). CD45R (B220) is an isoform of CD45, expressed on murine B-lineage cells (except for plasma cells) and on a small sub-population of T cells (PMID: 6975314; 15712182). It is commonly used as a pan B-cell marker in mice. CD45R is also expressed on activated T cells and NK cell subsets (PMID: 7514808; 17923504). The RA3-6B2 clone reacts with human and mouse CD45R.

## Storage

### Storage:

Store at 2-8°C. Avoid exposure to light. Stable for one year after shipment.

### Storage Buffer:

PBS with 0.1% sodium azide and 0.5% BSA, pH 7.3.

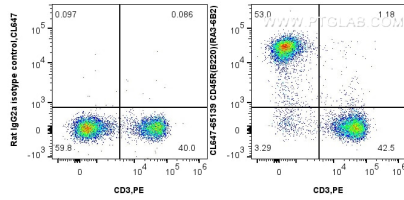
For technical support and original validation data for this product please contact:

T: 1 (888) 4PTGLAB (1-888-478-4522) (toll free in USA), or 1(312) 455-8498 (outside USA)

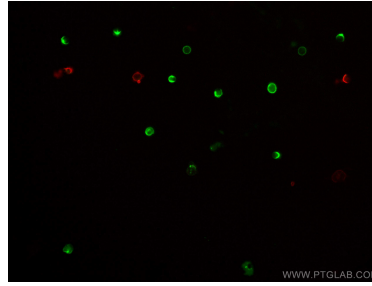
E: [proteintech@ptglab.com](mailto:proteintech@ptglab.com)  
W: [ptglab.com](http://ptglab.com)

This product is exclusively available under Proteintech Group brand and is not available to purchase from any other manufacturer.

## Selected Validation Data



1x10<sup>6</sup> C57BL/c mouse splenocytes were surface stained with 0.25 ug CoraLite® Plus 647 Anti-Mouse CD45R (B220) (CL647-65139, Clone:RA3-6B2) or 0.25 ug CoraLite® Plus 647 Rat IgG2a Isotype Control (2A3) (CL647-65209, Clone: 2A3). Cells were co-stained with PE Anti-Mouse CD3 (17A2) (PE-65077, Clone: 17A2). Cells were not fixed.



Immunofluorescent analysis of mouse splenocytes using CoraLite® Plus 647-conjugated CD45R (B220) antibody (CL647-65139, Clone: RA3-6B2, red) at dilution of 1:400, and CoraLite® 488-conjugated CD3 antibody (CL488-65077, Clone: 17A2, green).