

For Research Use Only

# CoraLite® Plus 647 Anti-Mouse Ly-6G/Ly-6C (Gr-1) (RB6-8C5)



Catalog Number: CL647-65140

## Basic Information

<b>Catalog Number:</b> CL647-65140	<b>GenBank Accession Number:</b> X70920	<b>Purification Method:</b> Affinity purification
<b>Size:</b> 100ug, 0.5 mg/ml	<b>GeneID (NCBI):</b> 546644	<b>CloneNo.:</b> RB6-8C5
<b>Source:</b> Rat	<b>Full Name:</b> lymphocyte antigen 6 complex, locus G	<b>Excitation/Emission maxima wavelengths:</b> 654 nm / 674 nm
<b>Isotype:</b> IgG2b, kappa		

## Applications

**Tested Applications:**  
FC

**Species Specificity:**  
Mouse

## Background Information

Ly-6G (lymphocyte antigen 6 complex, locus G), also known as Gr-1, is a 21-25 kDa, glycosylphosphatidylinositol-anchored protein expressed on myeloid lineage cells in mouse bone marrow (PMID: 8360469). The expression of Ly-6G increases on neutrophils as they differentiate from immature cells in the bone marrow to mature cells in the blood and spleen (PMID: 8890901). Antibodies targeting Ly6G (RB6-8C5 or 1A8) are commonly used in studies aimed at identifying the role of neutrophils (PMID: 23543767). The RB6-8C5 mAb has been reported to cross-react with Ly-6C on cells expressing Ly-6C (PMID: 8360469).

## Storage

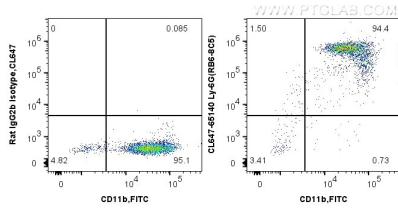
**Storage:**  
Store at 2-8°C. Avoid exposure to light. Stable for one year after shipment.

**Storage Buffer:**  
PBS with 0.1% sodium azide and 0.5% BSA, pH 7.3.

For technical support and original validation data for this product please contact:  
T: 1 (888) 4PTGLAB (1-888-478-4522) (toll free in USA), or 1(312) 455-8498 (outside USA)  
E: proteintech@ptglab.com  
W: ptglab.com

This product is exclusively available under Proteintech Group brand and is not available to purchase from any other manufacturer.

## Selected Validation Data



1X10<sup>6</sup> mouse bone marrow cells were surface co-stained with FITC Plus Anti-Mouse CD11b and 0.5 ug CoraLite® Plus 647 Anti-Mouse Ly-6G/Ly-6C (Gr-1) (CL647-65140, Clone: RB6-8C5) or 0.5 ug Control Antibody. Cells were not fixed.