

For Research Use Only

CoraLite® Plus 647 Anti-Mouse PD-1/CD279 (RMP1-30)

Catalog Number: CL647-65142



Basic Information

Catalog Number:

CL647-65142

Size:

100ug , 500 µg/ml

Source:

Rat

Isotype:

IgG2b, kappa

GenBank Accession Number:

BC119179

GeneID (NCBI):

18566

UNIPROT ID:

Q02242

Full Name:

programmed cell death 1

Purification Method:

Affinity purification

CloneNo.:

RMP1-30

Recommended Dilutions:

FC: 0.5 ug per 10⁶ cells in 100 µl suspension

Excitation/Emission maxima wavelengths:

654 nm / 674 nm

Applications

Tested Applications:

FC

Species Specificity:

Mouse

Positive Controls:

FC : Con-A stimulated BALB/c mouse splenocytes,

Background Information

Programmed cell death 1 (PD-1, also known as CD279) is an immunoinhibitory receptor that belongs to the CD28/CTLA-4 subfamily of the Ig superfamily. It is a 288 amino acid (aa) type I transmembrane protein composed of one Ig superfamily domain, a stalk, a transmembrane domain, and an intracellular domain containing an immunoreceptor tyrosine-based inhibitory motif (ITIM) as well as an immunoreceptor tyrosine-based switch motif (ITSM) (PMID: 18173375). PD-1 is expressed during thymic development and is induced in a variety of hematopoietic cells in the periphery by antigen receptor signaling and cytokines (PMID: 20636820). Engagement of PD-1 by its ligands PD-L1 or PD-L2 transduces a signal that inhibits T-cell proliferation, cytokine production, and cytolytic function (PMID: 19426218). It is critical for the regulation of T cell function during immunity and tolerance. Blockade of PD-1 can overcome immune resistance and also has been shown to have antitumor activity (PMID: 22658127; 23169436).

Storage

Storage:

Store at 2-8°C. Avoid exposure to light. Stable for one year after shipment.

Storage Buffer:

PBS with 0.09% sodium azide and 0.5% BSA, pH7.3

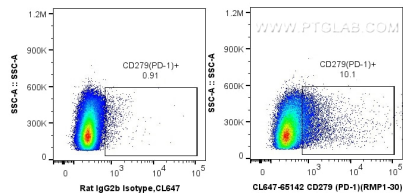
For technical support and original validation data for this product please contact:

T: 1 (888) 4PTGLAB (1-888-478-4522) (toll free in USA), or 1(312) 455-8498 (outside USA)

E: proteintech@ptglab.com
W: ptglab.com

This product is exclusively available under Proteintech Group brand and is not available to purchase from any other manufacturer.

Selected Validation Data



1X10⁶ Con-A stimulated BALB/c mouse splenocytes were surface stained with 0.5 ug CoraLite® Plus 647 Anti-Mouse PD-1/CD279 (CL647-65142, Clone: RMP1-30) or isotype control antibody. Cells were not fixed.