

For Research Use Only

# CoraLite® Plus 647 Anti-Human CD19 (SJ25C1)



Catalog Number: CL647-65145

## Basic Information

<b>Catalog Number:</b> CL647-65145	<b>GenBank Accession Number:</b> BC006338	<b>Purification Method:</b> Affinity purification
<b>Size:</b> 100tests , 5 µl/test	<b>GeneID (NCBI):</b> 930	<b>CloneNo.:</b> SJ25C1
<b>Source:</b> Mouse	<b>Full Name:</b> CD19 molecule	<b>Excitation/Emission maxima wavelengths:</b> 650 nm / 665 nm
<b>Isotype:</b> Mouse IgG1, kappa	<b>Calculated MW:</b> 556 aa, 61 kDa	

## Applications

**Tested Applications:**  
FC

**Species Specificity:**  
Human

## Background Information

CD19 is a 95 kDa type I transmembrane glycoprotein belonging to the immunoglobulin superfamily (PMID: 2472450). It is expressed by B cells and follicular dendritic cells. CD19 is up-regulated at the step of B-lineage commitment during the differentiation of the hematopoietic stem cell, it remains on during subsequent stages of differentiation until finally down-regulated during terminal differentiation into plasma cells (PMID: 8528044). CD19 is involved in B cell development, activation and differentiation. It is the dominant component for the signaling complex on B cells that includes CD21 (CR2), CD81 (TAPA-1) and CD225 and acts as a critical co-receptor for BCR signal transduction (PMID: 23210908).

## Storage

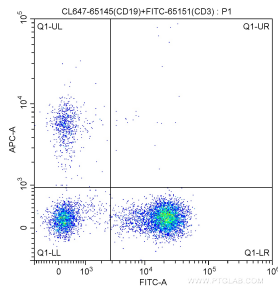
**Storage:**  
Store at 2-8°C. Avoid exposure to light.

**Storage Buffer:**  
PBS with 0.1% sodium azide and 0.5% BSA, pH 7.3.

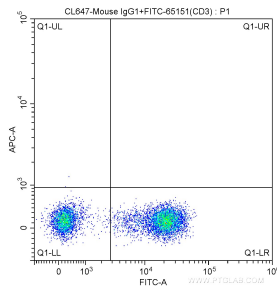
For technical support and original validation data for this product please contact:  
T: 1 (888) 4PTGLAB (1-888-478-4522) (toll free in USA), or 1(312) 455-8498 (outside USA)      E: proteintech@ptglab.com  
W: ptglab.com

This product is exclusively available under Proteintech Group brand and is not available to purchase from any other manufacturer.

## Selected Validation Data



100 ul human peripheral blood were surface stained with FITC Anti-Human CD3 (FITC-65151, Clone: UCHT1) and 5.00 ul CoraLite® Plus 647-conjugated Anti-Human CD19 (CL647-65145, Clone: SJ25C1). Lymphocytes were gated for analysis. Cells were not fixed.



100 ul human peripheral blood were surface stained with FITC Anti-Human CD3 (FITC-65151, Clone: UCHT1) and CoraLite® Plus 647-conjugated Mouse IgG1 isotype control antibody. Lymphocytes were gated for analysis. Cells were not fixed.