

For Research Use Only

CoraLite® Plus 647 Anti-Human CD18 (TS1/18)

Catalog Number:CL647-65190



Basic Information

Catalog Number:

CL647-65190

Size:

100tests , 5 µl/test

Source:

Mouse

Isotype:

IgG1, kappa

GenBank Accession Number:

BC005861

GeneID (NCBI):

3689

ENSEMBL Gene ID:

ENSG00000160255

UNIPROT ID:

P05107

Full Name:

integrin, beta 2 (complement component 3 receptor 3 and 4 subunit)

Calculated MW:

85 kDa

Purification Method:

Protein G purification

CloneNo.:

TS1/18

Excitation/Emission maxima wavelengths:

654 nm / 674 nm

Applications

Tested Applications:

FC

Species Specificity:

human

Background Information

CD18, also known as integrin beta-2, is a transmembrane protein that forms heterodimers with CD11a, CD11b, CD11c, CD11d (PMID: 1968349). CD11a/CD18 (LFA-1) is expressed by all leukocytes, while CD11b/CD18 (Mac-1) and CD11c/CD18 (p150,95) are normally restricted to expression on monocytes, macrophages, polymorphonuclear lymphocytes (PMNs), and natural killer cells (PMID: 1968349; 3109455; 10946284). CD18 plays an important role in mediating cell adhesion during immune response and defects of CD18 cause leukocyte adhesion deficiency (PMID: 3594570).

Storage

Storage:

Store at 2-8°C. Avoid exposure to light. Stable for one year after shipment.

Storage Buffer:

PBS with 0.09% sodium azide and 0.5% BSA, pH7.3

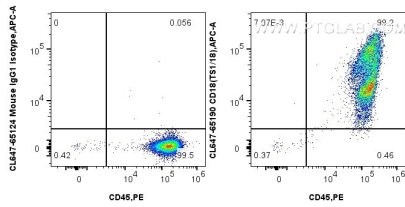
For technical support and original validation data for this product please contact:

T: 1 (888) 4PTGLAB (1-888-478-4522) (toll free in USA), or 1(312) 455-8498 (outside USA)

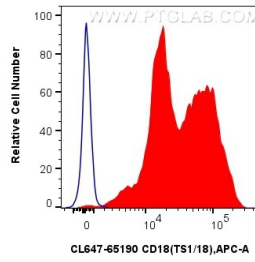
E: proteintech@ptglab.com
W: ptglab.com

This product is exclusively available under Proteintech Group brand and is not available to purchase from any other manufacturer.

Selected Validation Data



1x10⁶ human PBMCs were surface stained with PE Anti-Human CD45, and 5 ul CoraLite® Plus 647 Anti-Human CD18 (TS1/18) (CL647-65190, Clone: TS1/18) or CoraLite® Plus 647 Mouse IgG1 Isotype Control (MOPC-21) (CL647-65124, Clone: MOPC-21). Cells were incubated with FC Receptor Block prior to staining. Cells were not fixed.



1x10⁶ human PBMCs were surface stained with 5 ul CoraLite® Plus 647 Anti-Human CD18 (TS1/18) (CL647-65190, Clone: TS1/18) (red) or CoraLite® Plus 647 Mouse IgG1 Isotype Control (MOPC-21) (CL647-65124, Clone: MOPC-21) (blue). Cells were incubated with FC Receptor Block prior to staining. Cells were not fixed.