

For Research Use Only

CoraLite® Plus 647 Anti-Human CD2 (TS1/8)



Catalog Number: **CL647-65192**

Basic Information

Catalog Number: CL647-65192	GenBank Accession Number: BC033583	Purification Method: Protein G purification
Size: 100tests , 5 µl/test	GeneID (NCBI): 914	CloneNo.: TS1/8
Source: Mouse	Full Name: CD2 molecule	Excitation/Emission maxima wavelengths: 650 nm / 665 nm
Isotype: IgG1, kappa	Calculated MW: 351 aa, 39 kDa	

Applications

Tested Applications:
FC

Species Specificity:
Human

Background Information

CD2 is a cell surface glycoprotein present on a majority of thymocytes, all mature T cells and subset of NK cells but not on B lymphocytes. It is a pan T-cell marker. CD2 interacts with lymphocyte function-associated antigen (LFA-3/CD58) and CD48/BCM1 to mediate adhesion between T-cells and other cell types. CD2 is implicated in the triggering of T-cells, the cytoplasmic domain is implicated in the signaling function.

Storage

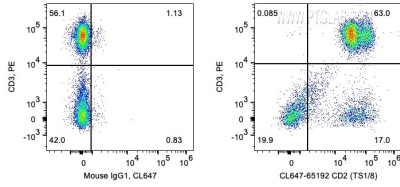
Storage:
Store at 2-8°C. Avoid exposure to light. Stable for one year after shipment.

Storage Buffer:
PBS with 0.1% sodium azide and 0.5% BSA, pH 7.3.

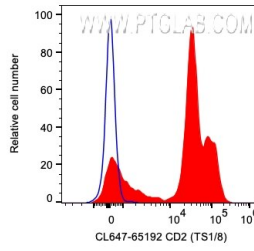
For technical support and original validation data for this product please contact:
T: 1 (888) 4PTGLAB (1-888-478-4522) (toll free in USA), or 1(312) 455-8498 (outside USA) E: proteintech@ptglab.com
W: ptglab.com

This product is exclusively available under Proteintech Group brand and is not available to purchase from any other manufacturer.

Selected Validation Data



1X10⁶ human PBMCs were surface co-stained with PE Anti-Human CD3 and 5 ul CoraLite® Plus 647 Anti-Human CD2 (CL647-65192, Clone:TS1/8) or Mouse IgG1 Isotype Control. Cells were not fixed. Lymphocytes were gated.



1X10⁶ human PBMCs were surface stained with 5 ul CoraLite® Plus 647 Anti-Human CD2 (CL647-65192, Clone:TS1/8) or Mouse IgG1 Isotype Control. Cells were not fixed. Lymphocytes were gated.