

For Research Use Only

# CoraLite® Plus 647 Anti-Mouse CD8a (5H10-1)



Catalog Number: CL647-65205

## Basic Information

<b>Catalog Number:</b> CL647-65205	<b>GenBank Accession Number:</b> BC030679	<b>Purification Method:</b> Protein A purification
<b>Size:</b> 100ug, 0.5 mg/ml	<b>GeneID (NCBI):</b> 12525	<b>CloneNo.:</b> 5H10-1
<b>Source:</b> Rat	<b>Full Name:</b> CD8 antigen, alpha chain	<b>Excitation/Emission maxima wavelengths:</b> 654 nm / 674 nm
<b>Isotype:</b> IgG2b, lambda		

## Applications

**Tested Applications:**  
FC

**Species Specificity:**  
Mouse

## Background Information

CD8 is a transmembrane glycoprotein composed of two disulfide-linked chains. It can be present as a homodimer of CD8a or as a heterodimer of CD8a and CD8β (PMID: 3264320; 8253791). CD8 is found on most thymocytes. The majority of class I-restricted T cells express mostly the CD8αβ heterodimer while CD8αα homodimers alone have been found on some gut intraepithelial T cells, on some T cell receptor (TCR) γδ T cells and on NK cells (PMID: 2111591; 1831127; 8420975). CD8 acts as a co-receptor that binds to MHC class-I and participates in cytotoxic T cell activation (PMID: 8499079). During T cell development, CD8 is required for positive selection of CD4-/CD8+ T cells (PMID: 1968084).

## Storage

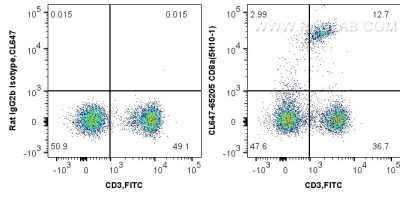
**Storage:**  
Store at 2-8°C. Avoid exposure to light. Stable for one year after shipment.

**Storage Buffer:**  
PBS with 0.1% sodium azide and 0.5% BSA, pH 7.3.

For technical support and original validation data for this product please contact:  
T: 1 (888) 4PTGLAB (1-888-478-4522) (toll free in USA), or 1(312) 455-8498 (outside USA)      E: proteintech@ptglab.com  
W: ptglab.com

This product is exclusively available under Proteintech Group brand and is not available to purchase from any other manufacturer.

## Selected Validation Data



$1 \times 10^6$  mouse splenocytes were surface stained with FITC Anti-Mouse CD3 (FITC-65077, Clone: 17A2) and 0.125  $\mu$ g CoraLite® Plus 647 Anti-Mouse CD8a (CL647-65205, Clone: 5H10-1) or CoraLite® Plus 647-Conjugated rat IgG2b isotype control. Cells were not fixed.