

For Research Use Only

# CoraLite® Plus 647 Anti-Mouse CD62L (MEL14)

Catalog Number: CL647-65219



## Basic Information

Catalog Number:

CL647-65219

Size:

100ug, 0.5 mg/ml

Source:

Rat

Isotype:

IgG2a, kappa

GenBank Accession Number:

BC052681

GeneID (NCBI):

20343

UNIPROT ID:

P18337

Full Name:

selectin, lymphocyte

Purification Method:

Protein A purification

CloneNo.:

MEL14

Excitation/Emission maxima wavelengths:

654 nm / 674 nm

## Applications

Tested Applications:

FC

Species Specificity:

mouse

## Background Information

CD62L, also known as L-selectin or SELL, is a member of the selectin family of adhesion molecules that also include CD62E (E-selectin) and CD62P (P-selectin) (PMID: 2663882, 2473156, 1382078). CD62L is a highly glycosylated protein of 95-105 kDa on neutrophils and 74 kDa on lymphocytes (PMID: 1382078; 1694883, 1695155). CD62L is expressed on the surface of most leukocytes, including lymphocytes, neutrophils, monocytes, eosinophils, hematopoietic progenitor cells, and immature thymocytes (PMID: 1694883, 1688580). It mediates the binding of lymphocytes to high endothelial venules (HEV) of peripheral lymph nodes through interactions with a constitutively expressed ligand, and is also involved in lymphocyte, neutrophil, and monocyte attachment to endothelium at sites of inflammation (PMID: 1382078).

## Storage

Storage:

Store at 2-8°C. Avoid exposure to light. Stable for one year after shipment.

Storage Buffer:

PBS with 0.09% sodium azide and 0.5% BSA

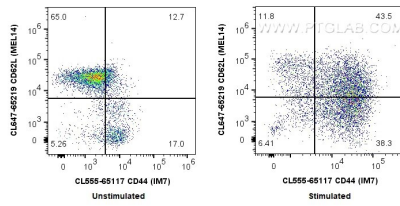
For technical support and original validation data for this product please contact:

T: 1 (888) 4PTGLAB (1-888-478-4522) (toll free in USA), or 1(312) 455-8498 (outside USA)

E: [proteintech@ptglab.com](mailto:proteintech@ptglab.com)  
W: [ptglab.com](http://ptglab.com)

This product is exclusively available under Proteintech Group brand and is not available to purchase from any other manufacturer.

## Selected Validation Data



$1 \times 10^6$  unstimulated or ConA stimulated BALB/c mouse splenocytes (2 days) were surface stained with 0.25  $\mu$ g CoraLite® Plus 647 Anti-Mouse CD62L (CL647-65219, Clone: MEL14) and 0.25  $\mu$ g CoraLite®555 Anti-Mouse CD44 (IM7) (CL555-65117, Clone: IM7). Cells were not fixed.