

For Research Use Only

# CoraLite® Plus 647 Mouse IgM Isotype Control (MOPC-104E)

Catalog Number: CL647-65243



## Basic Information

Catalog Number:

CL647-65243

Size:

100ug , 200 µg/ml

Source:

Mouse

Isotype:

IgM, lambda

GenBank Accession Number:

GeneID (NCBI):

Full Name:

Purification Method:

N/A

CloneNo.:

MOPC-104E

Excitation/Emission maxima  
wavelengths:

654 nm / 674 nm

## Applications

Tested Applications:

FC

Species Specificity:

n/a

## Background Information

The MOPC-104E immunoglobulin is useful as an isotype-matched control for mouse IgM antibodies. B1355S dextran, nigerosyl-alpha (1-3)-nigerose, and nigerosyl-alpha (1-3)-glucose have abilities to bind to MOPC-104E immunoglobulin (PMID: 6165777). This antibody has been quality-tested for flow cytometry as negative control.

## Storage

Storage:

Store at 2-8°C. Avoid exposure to light. Stable for one year after shipment.

Storage Buffer:

PBS with 0.09% sodium azide and 0.5% BSA.

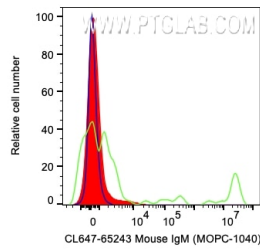
For technical support and original validation data for this product please contact:

T: 1 (888) 4PTGLAB (1-888-478-4522) (toll free  
in USA), or 1(312) 455-8498 (outside USA)

E: [proteintech@ptglab.com](mailto:proteintech@ptglab.com)  
W: [ptglab.com](http://ptglab.com)

This product is exclusively available under Proteintech Group brand and is not available to purchase from any other manufacturer.

## Selected Validation Data



1X10<sup>6</sup> human whole blood cells were surface stained with 0.2 ug CoraLite® Plus 647 Anti-Mouse IgM Isotype Control (red), CoraLite 650 Plus Anti-Human STRO-1 (green), or unstained (blue). Cells were not fixed. CD45dim, CD34+ lymphocytes were gated.