

For Research Use Only

# CoraLite® Plus 647 Anti-Human CD14 (26IC)



Catalog Number: **CL647-65246**

## Basic Information

<b>Catalog Number:</b> CL647-65246	<b>GenBank Accession Number:</b> BC010507	<b>Purification Method:</b> Affinity purification
<b>Size:</b> 100tests , 5 µl/test	<b>GeneID (NCBI):</b> 929	<b>CloneNo.:</b> 26IC
<b>Source:</b> Mouse	<b>Full Name:</b> CD14 molecule	<b>Excitation/Emission maxima wavelengths:</b> 654 nm / 674 nm
<b>Isotype:</b> IgG2b	<b>Calculated MW:</b> 375 aa, 40 kDa	

## Applications

**Tested Applications:**  
FC

**Species Specificity:**  
Human

## Background Information

CD14 is a 50-55 kDa glycosylphosphatidylinositol-anchored glycoprotein preferentially expressed on monocytes and macrophages, and at lower levels on granulocytes (PMID: 3385210; 2462937; 7685797). CD14 can also exist as a soluble protein. CD14 acts as a co-receptor for bacterial liposaccharides (LPS) (PMID: 1698311). It plays a major role in the inflammatory response of monocytes to LPS.

## Storage

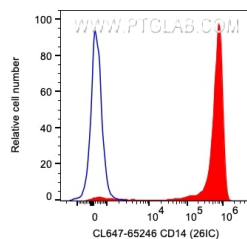
**Storage:**  
Store at 2-8°C. Avoid exposure to light. Stable for one year after shipment.

**Storage Buffer:**  
PBS with 0.09% sodium azide and 0.5% BSA.

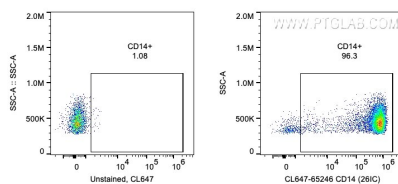
For technical support and original validation data for this product please contact:  
T: 1 (888) 4PTGLAB (1-888-478-4522) (toll free in USA), or 1(312) 455-8498 (outside USA)  
E: [proteintech@ptglab.com](mailto:proteintech@ptglab.com)  
W: [ptglab.com](http://ptglab.com)

This product is exclusively available under Proteintech Group brand and is not available to purchase from any other manufacturer.

## Selected Validation Data



1X10<sup>6</sup> human PBMCs were surface stained with 5 ul CoraLite® Plus 647 Anti-Human CD14 (CL647-65246, Clone:26IC) (red) or unstained. Cells were not fixed. Monocytes were gated.



1X10<sup>6</sup> human PBMCs were surface stained with 5 ul CoraLite® Plus 647 Anti-Human CD14 (CL647-65246, Clone: 26IC) or unstained. Cells were not fixed. Monocytes were gated.